

NF /

Arnulf Rainer

Baden, 1929

His commitment to the search for new pictorial approaches, accompanied by his performative work and extensive written documentation, have enshrined Arnulf Rainer as one of the most influential living artists.

Always exalting the body language that painting implies, the artist highlights the first forms of human expression and, in the 1970s, he begins to photograph himself, creating a link between the theatrical and the graphic as a means of expression.

Near to Viennese Actionism and exploring gestures through performance, he expands his practice to video, and begins painting with his hands, which will accompany him throughout his career.

Mainly interested in automatism and the desire to destroy conventional communication in order to recover the richness of human expression, Arnulf Rainer bases his expressiveness on the concealment of images of other artists and self-portraits, reaching abstraction and almost total obscuration of forms. In this sense, his body of work has always aimed to free itself from its own limitations, even exceeding by the form of canvases the conventional standards.

Arnulf Rainer

In 1978 he represents Austria at the Venice Biennale and receives the Grand Austrian State Prize. Since 1981 he has been a member of the Academies of Fine Arts in Berlin and Vienna. In the same year he received the Max Beckman Prize in Frankfurt and in 1989 he was awarded the International Photography Prize in New York.

Among the museums that have dedicated retrospectives to him are the Albertina Museum in Vienna, the Stedelijk Museum in Amsterdam, the Guggenheim Museum in New York, the Nationalgalerie in Berlin, the Kunsthalle in Bern and the Kunstverein in Hamburg.

In 2009 the Arnulf Museum opens in Baden, Austria.

INTE

/



NF /

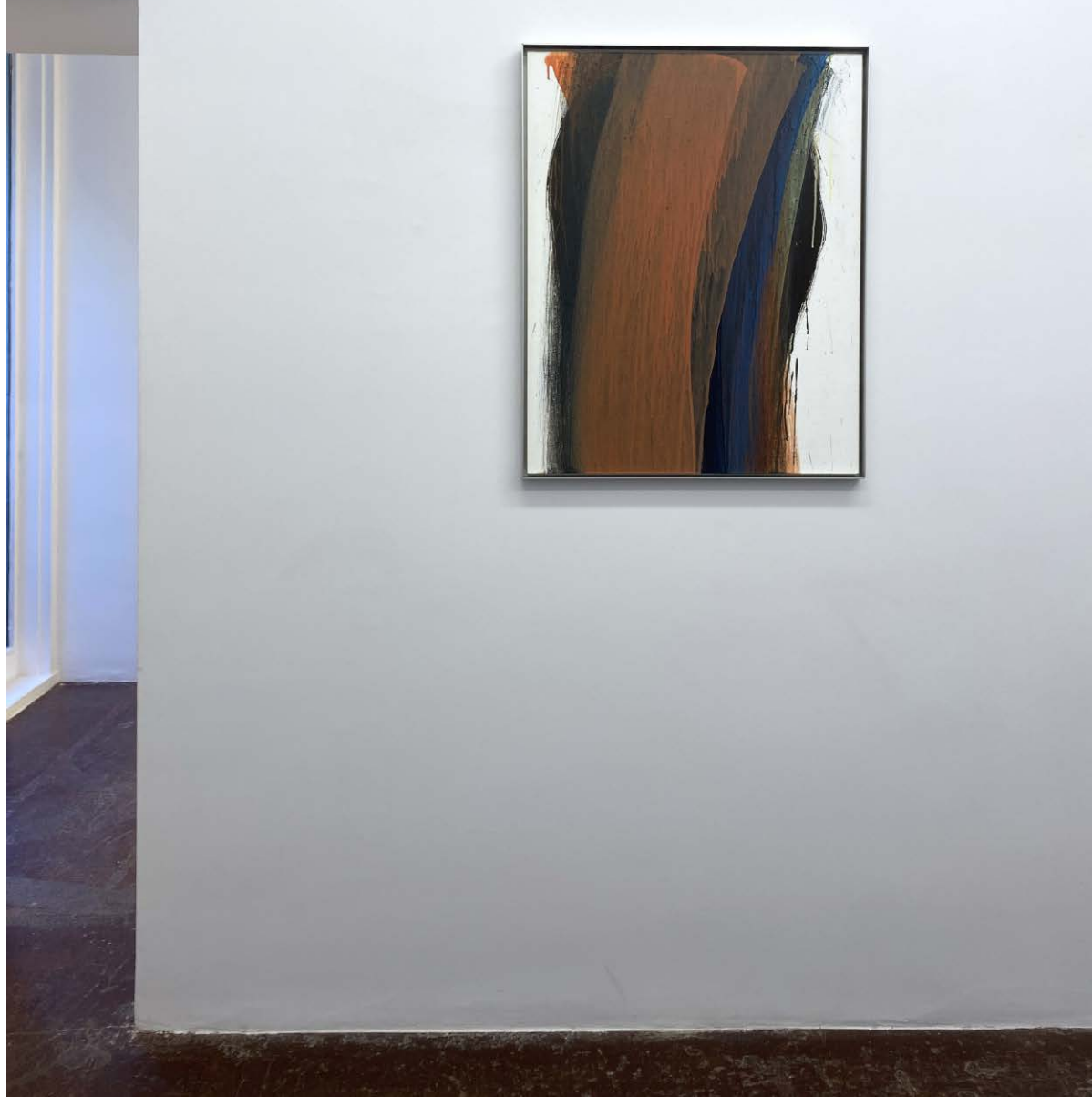
Arnulf Rainer. Rot, Blau, Gelb (2024)

"Suddenly we saw that Arnulf Rainer, akin to a strange arrangement of flowers, is an avid blender of color; in his paintings color unfold endlessly and with whimsical confusion".

- Rudi Fuchs

Best known for superimposing successive layers of dark paint on photographs, covering pre-existing images, Arnulf Rainer has also developed this technique with an immense variety of bright colors such as red, blue, green or yellow, which are part of his mode of expression.

With works from 1992 to 2015, *Rot Blau Gelb* explores this use of color and also the artist's way of applying it. If the gestural, violent and energetic use of physical force, through the use of the hands, was the protagonist of the 70s and 80s, from the 90s onwards Arnulf Rainer also incorporated a more transparent use of paint, through use not only of the hands but of wide brushes to apply the paint in the form of veils, which coexists with the use of the hands or punches.



NF /

Arnulf Rainer
Untitled
2007
Temper on wood
87,5 x 70 cm





NF /

Arnulf Rainer

Rosa Blüten

1996

Temper on cardboard on wood

103,5 x 73,5 cm



NF /

Arnulf Rainer

Makrokosmos

1994/95

Temper on cardboard on wood

105,5 x 76,5 cm





NF /

Arnulf Rainer
Untitled
2001
Temper on wood
62,5 x 83 cm

NF /

Arnulf Rainer

Blumenserie

circa 2000

Mixed technique on paper on wood

44 x 31,5 cm



NF /

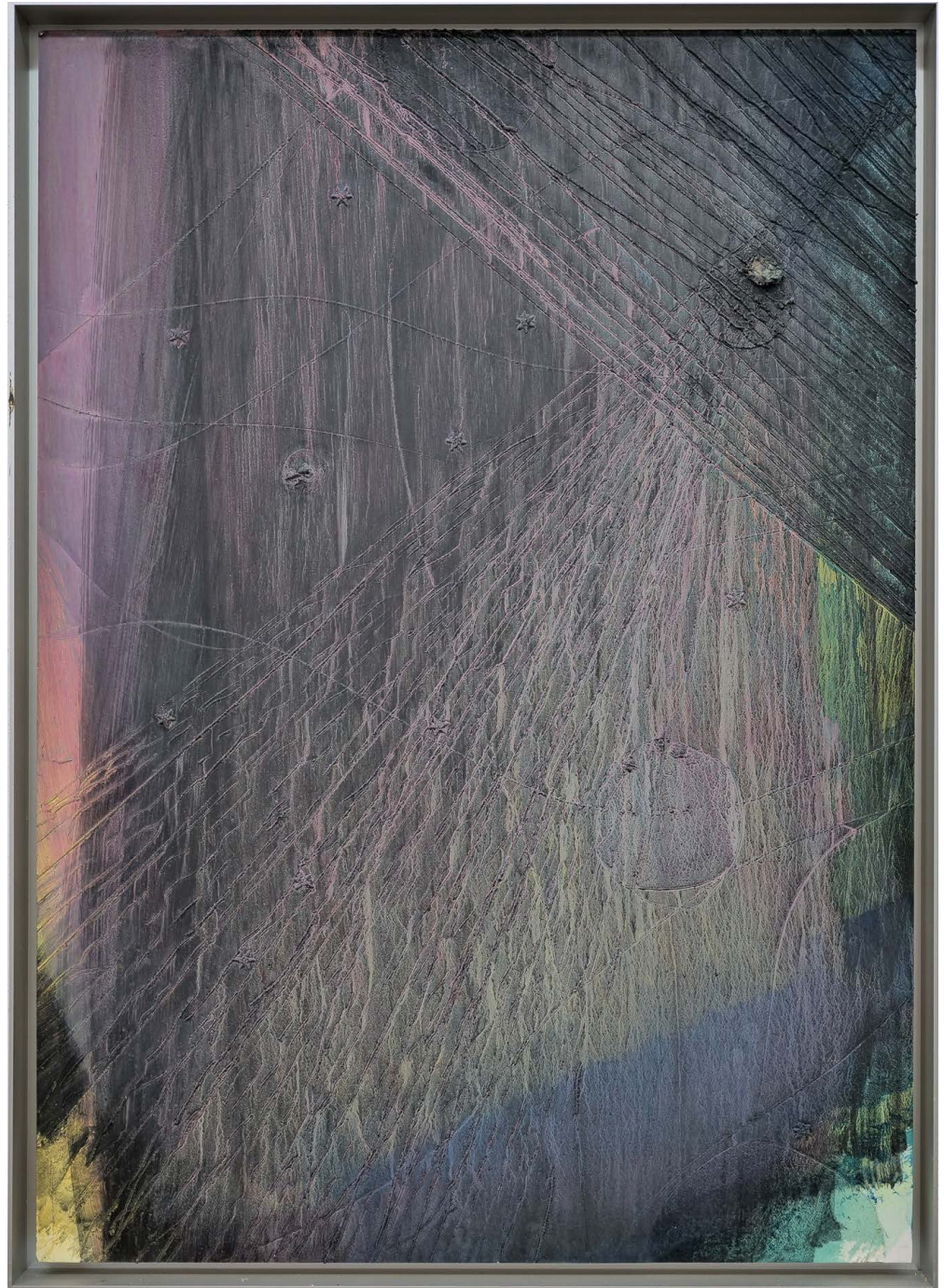
Arnulf Rainer

Untitled

1995

Temper on cardboard on wood

105 x 76,5 cm





NF /

Arnulf Rainer

Regenbogen

1995

Temper on cardboard on wood

105 x 76,5 cm



NF /

Arnulf Rainer

Blumenserie
circa 2000

Mixed technique on paper on wood
44 x 31,5 cm



NF /

Arnulf Rainer

Blumenserie

ab. 2000

Mixed technique on paper on wood

44 x 31,5 cm



NF /

Arnulf Rainer

Lotus gelb

1996

Temper on cardboard on wood

103,5 x 73,5 cm



NF /

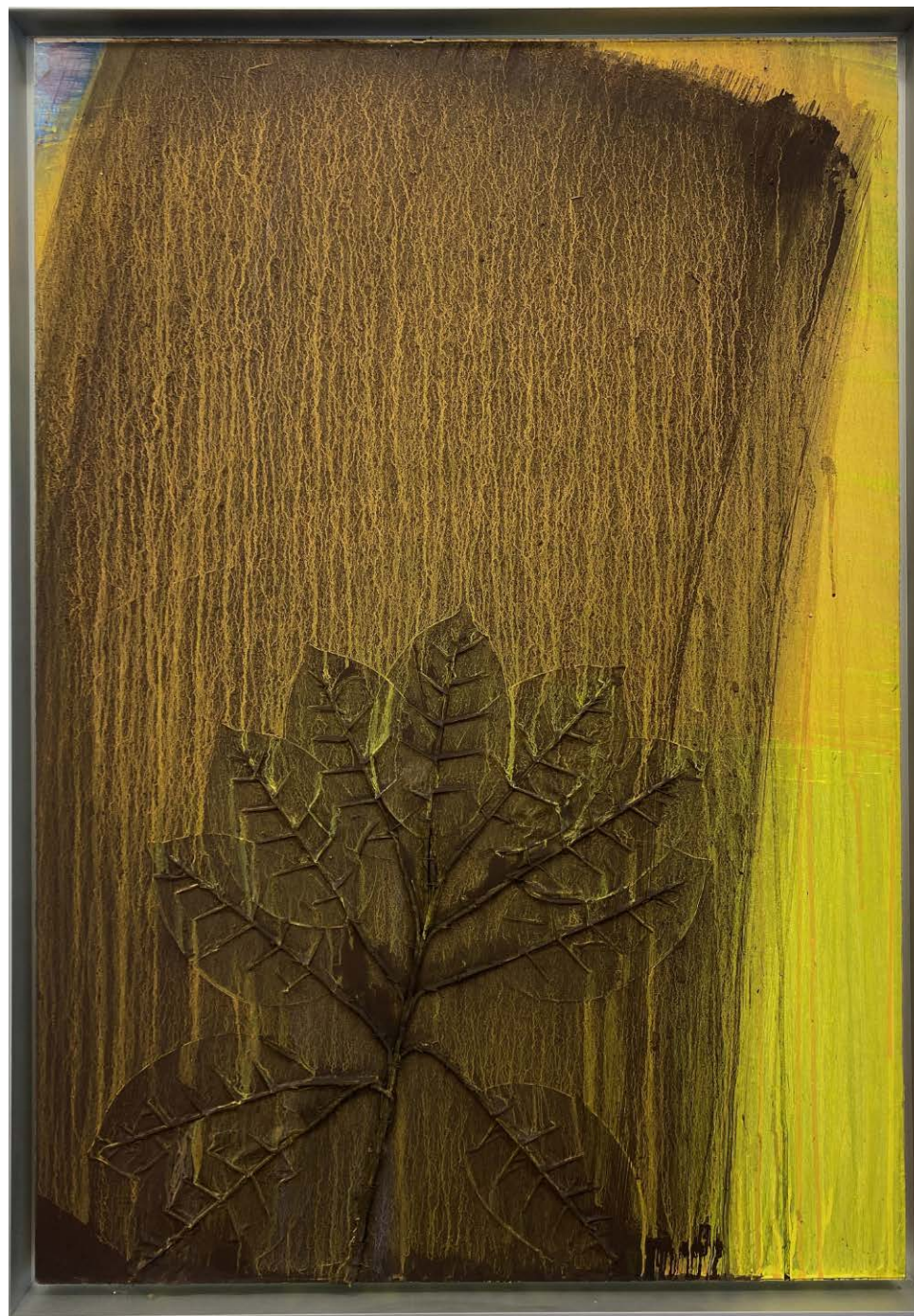
Arnulf Rainer

Untitled

1996

Temper on cardboard on wood

103,5 x 73,5 cm



NF /

Arnulf Rainer

Mikrokosmos

1994

Temper on cardboard on wood

105,5 x 76,5 cm



NF/

Arnulf Rainer
Blumenserie
circa 2000
Mixed technique on paper on wood
44 x 31,5 cm



NF /

Arnulf Rainer

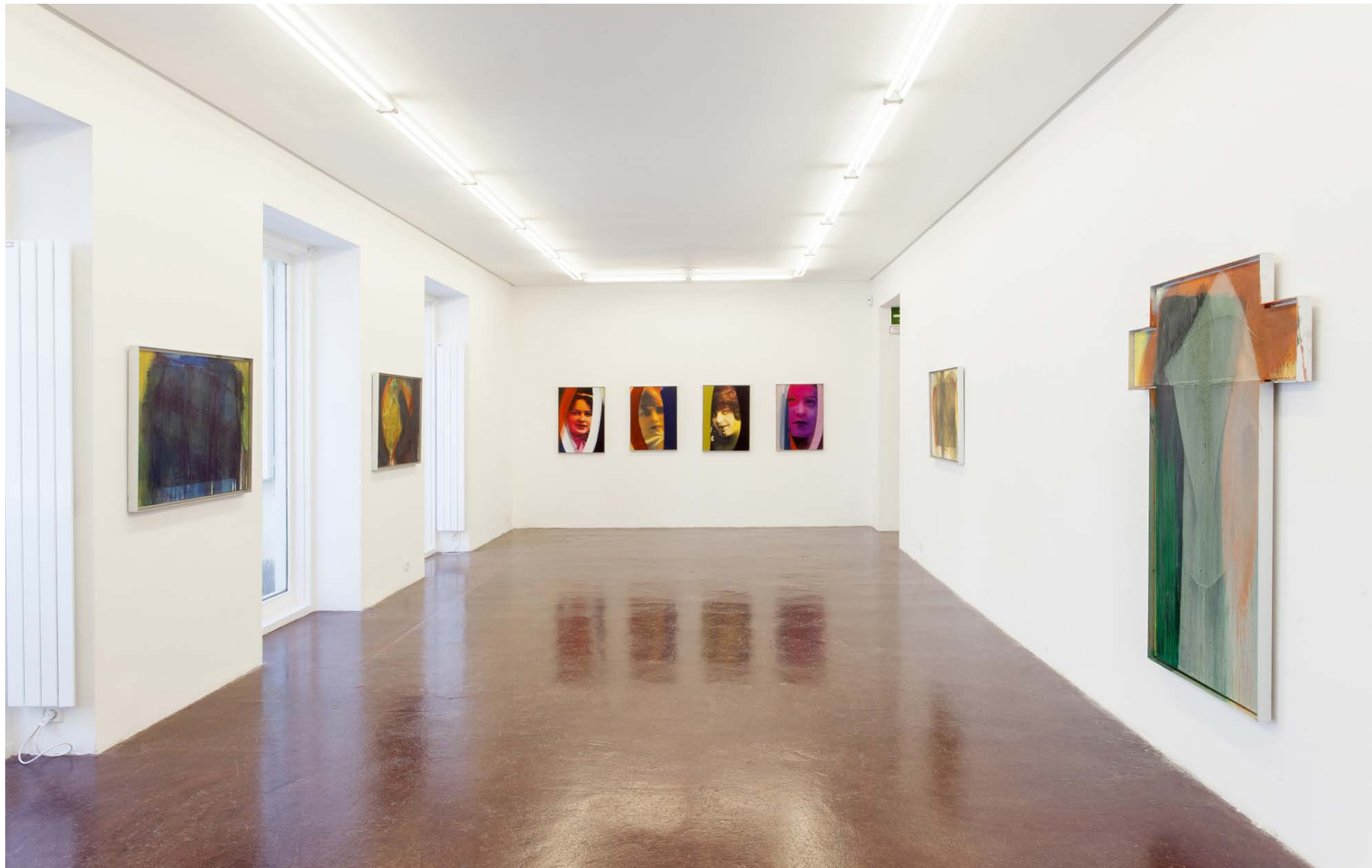
Blumenserie

circa 2000

Mixed technique on paper on wood

44 x 31,5 cm





NF/

Arnulf Rainer. Fanberfest
2016
Installation view
NF/ NIEVES FERNÁNDEZ, Madrid



NF/

Arnulf Rainer. Fanberfest
2016
Installation view
NF/ NIEVES FERNÁNDEZ, Madrid

NF /

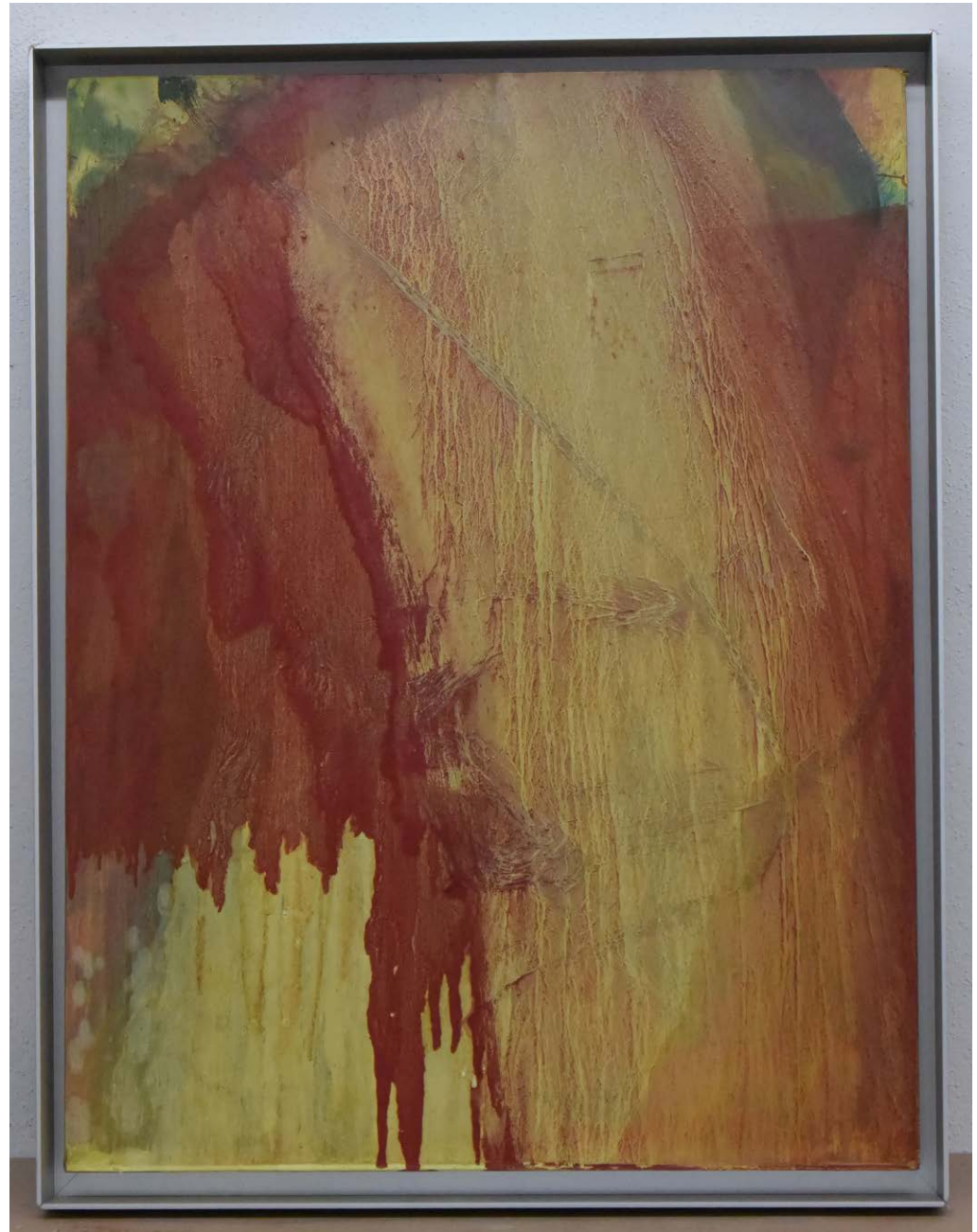
Arnulf Rainer

Untitled

1993

Oil on paper on board

60 x 46 cm



NF /

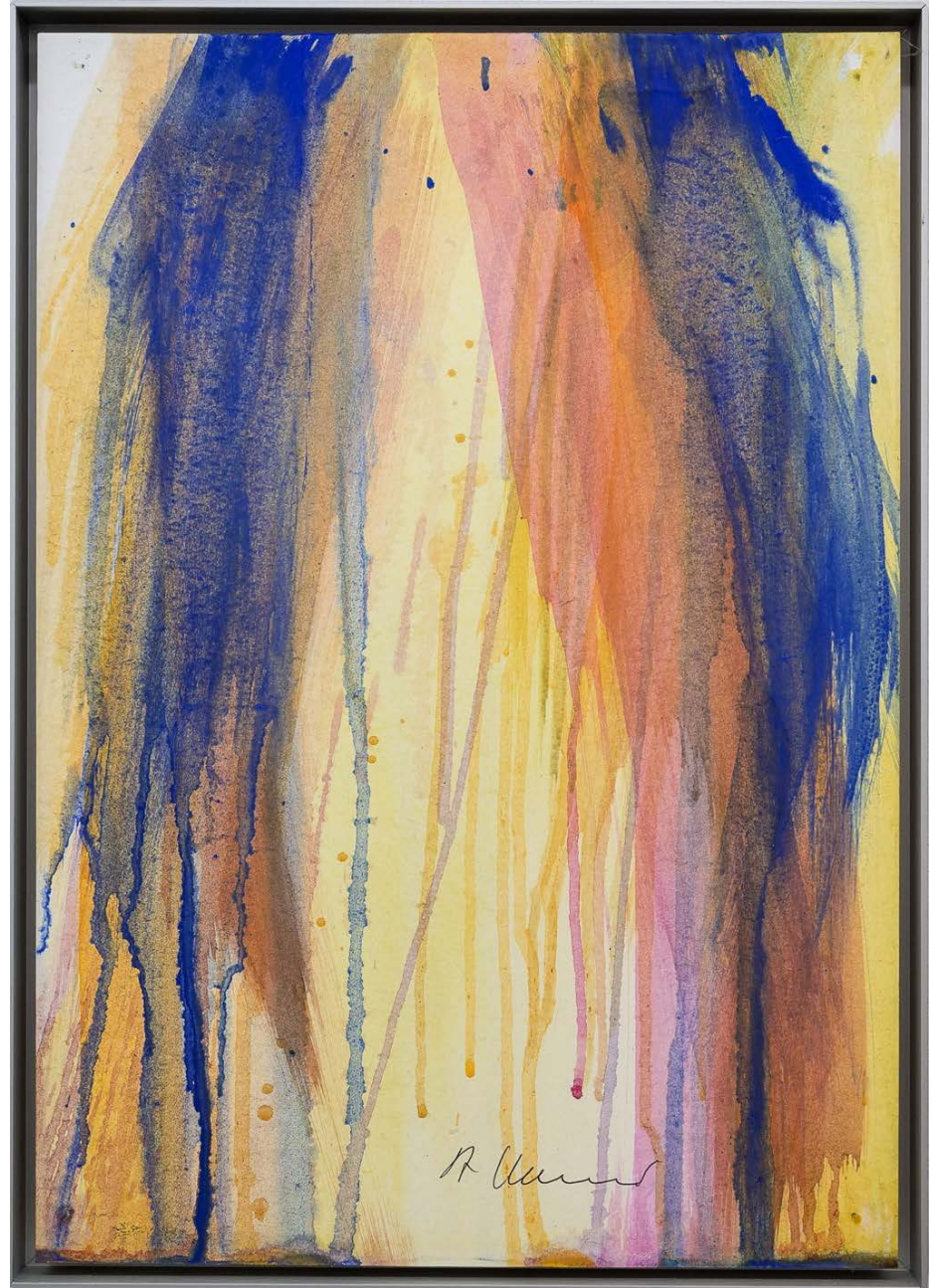
Arnulf Rainer

Untitled

2015-16

Acrylic on paper on wood

52 x 37 cm



NF /

Arnulf Rainer

Untitled

2015-16

Acrylic on paper on wood

52 x 37 cm



NF /

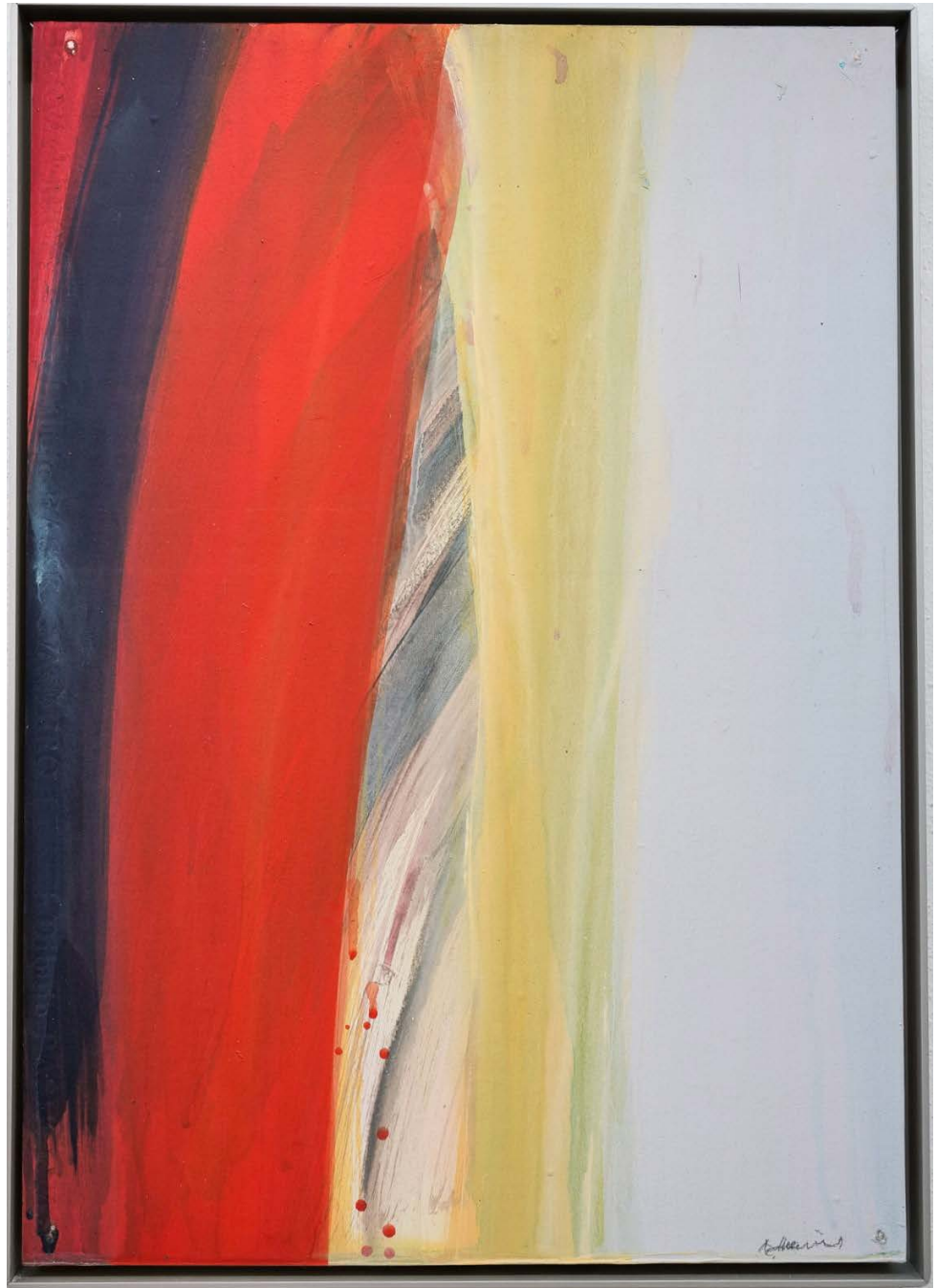
Arnulf Rainer

Untitled

undated

Tempera on paper on wood

51,5 x 36,5 cm





NF /

Arnulf Rainer

Untitled

1993

Pastel and oil on paper on wood

63 x 84 cm



NF /

Arnulf Rainer

Landschaft

1991-92

Pastel and oil on paper on wood

73 x 102 cm



NF /

Arnulf Rainer

Landschaft

1991-92

Oil on paper and cardboard on board

29 x 40 inches



NF /

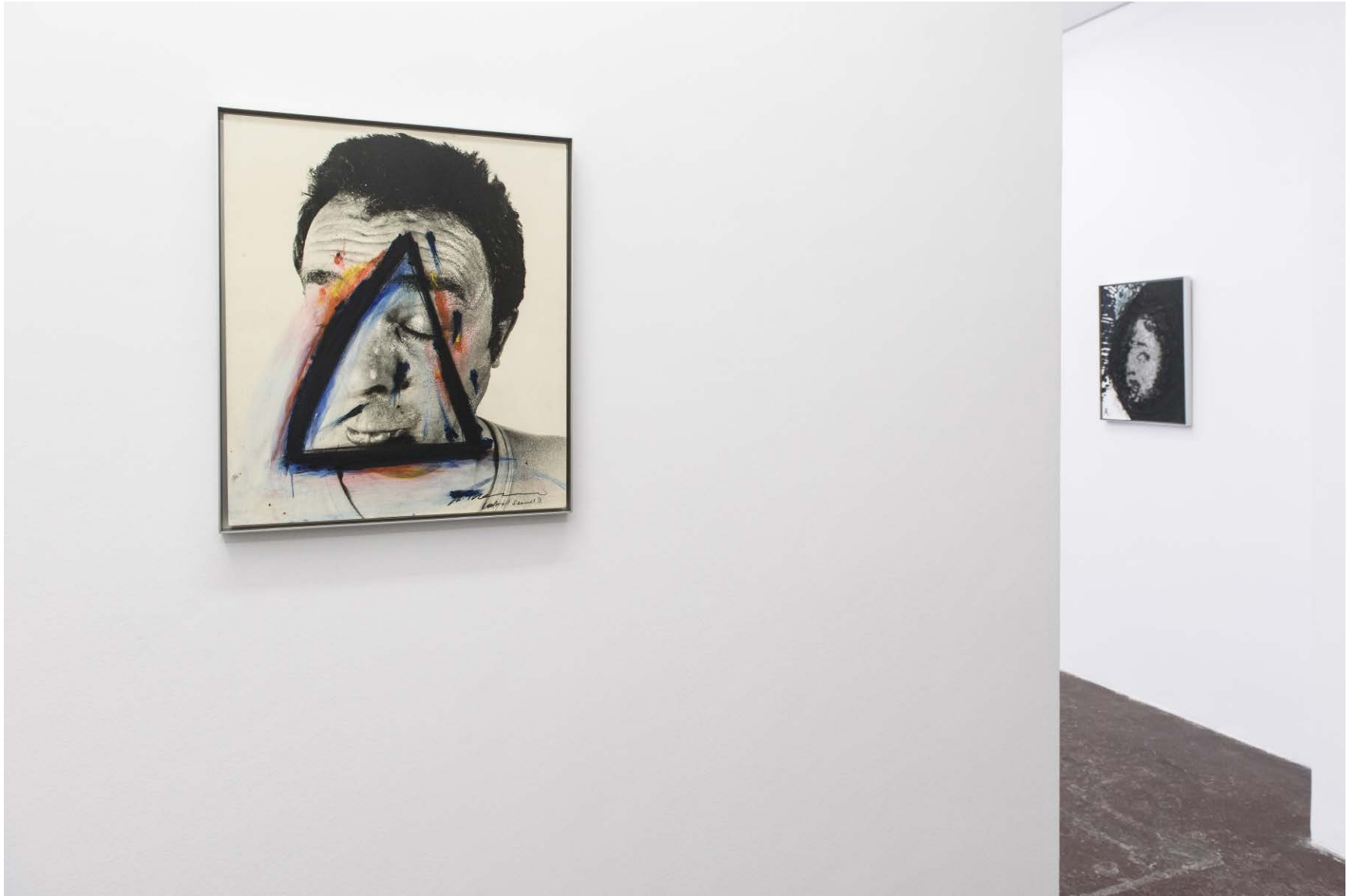
Arnulf Rainer

Serie Face Farces

1970-75

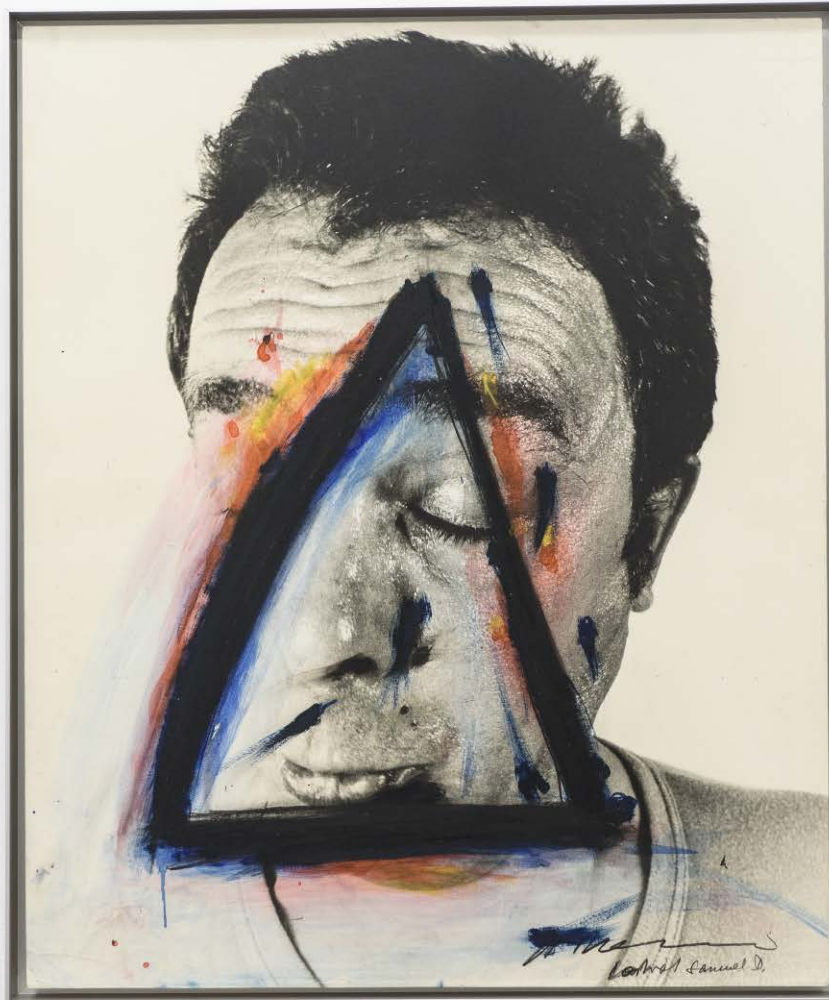
Mixed media on photograph on wood

50,5 x 63 cm



NF/

Arnulf Rainer
Visages
2020
Installation view
NF/ NIEVES FERNANDEZ



NF /

Arnulf Rainer

Serie Face Farces. Porträt Samuel D.

1970-75

Mixed media on photograph on wood

63 x 53 cm



NF /

Arnulf Rainer

Serie Face Farces

1970-75

Pencil on photograph

18 x 24 cm



NF/

Arnulf Rainer

Visages

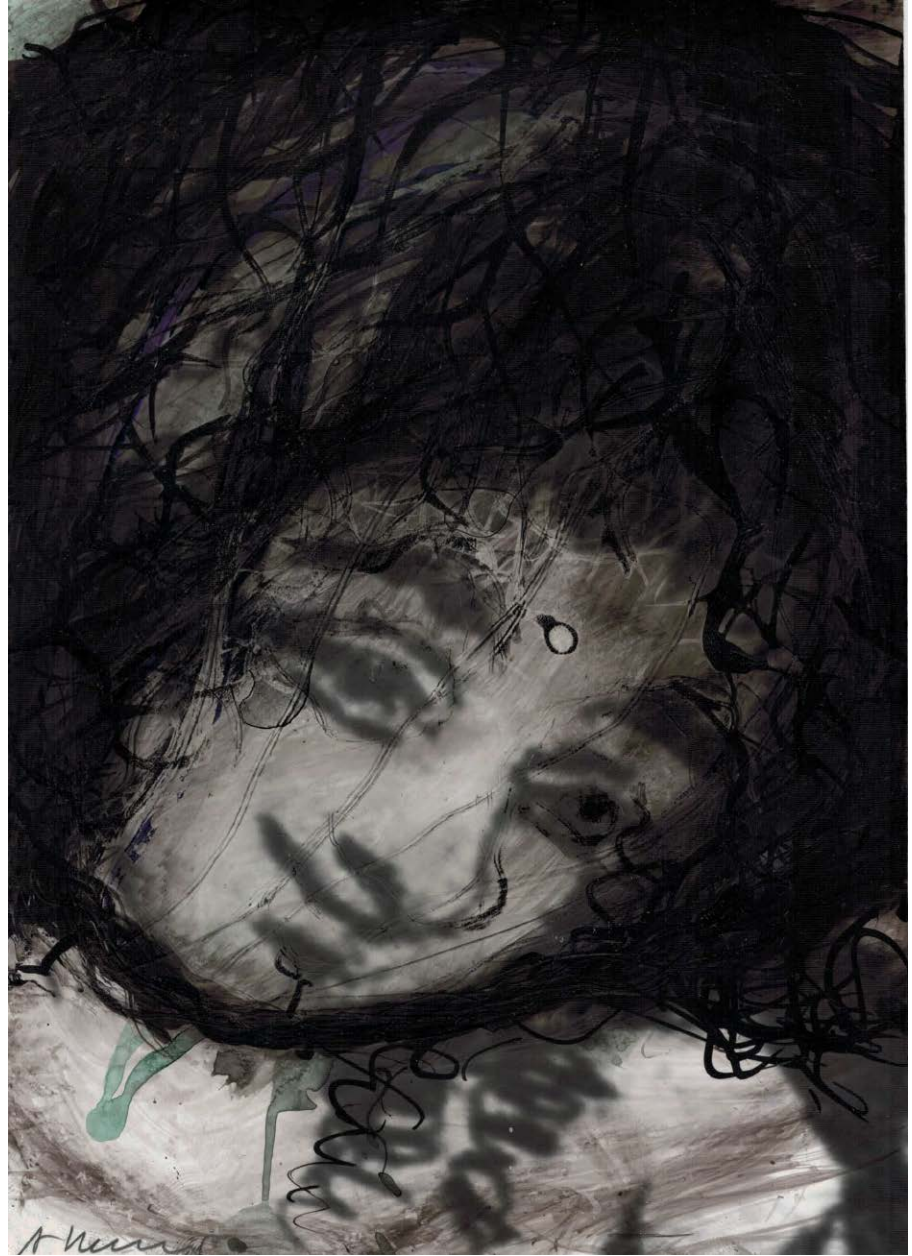
2020

Installation view

NF/ NIEVES FERNÁNDEZ

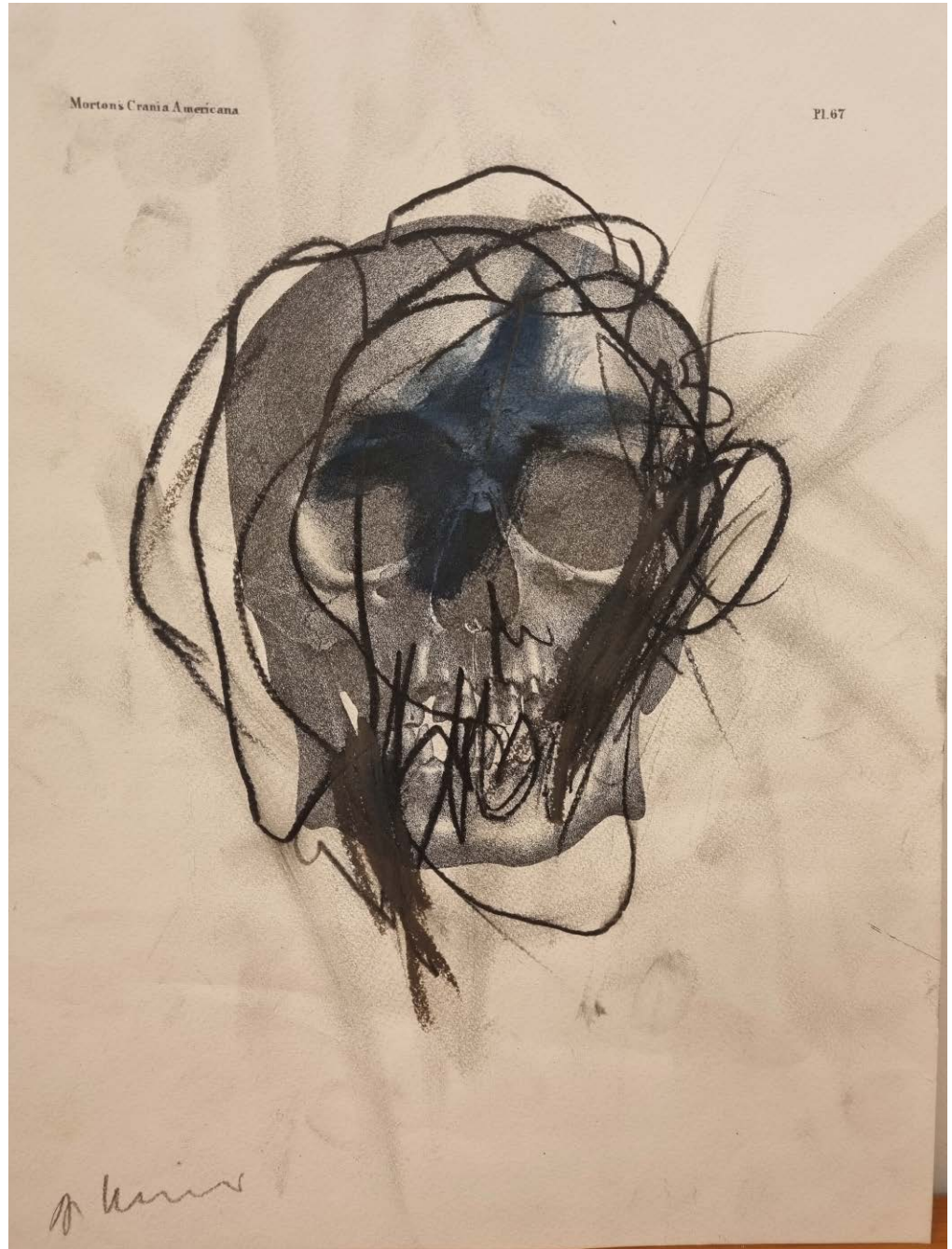
NF /

Arnulf Rainer
P22 ('Goya' series)
1983
Mixed media on photography
24 x 17 cm



NF /

Arnulf Rainer
P15. Untitled
Undated
Mixed media on paper
35 x 25 cm



NF /

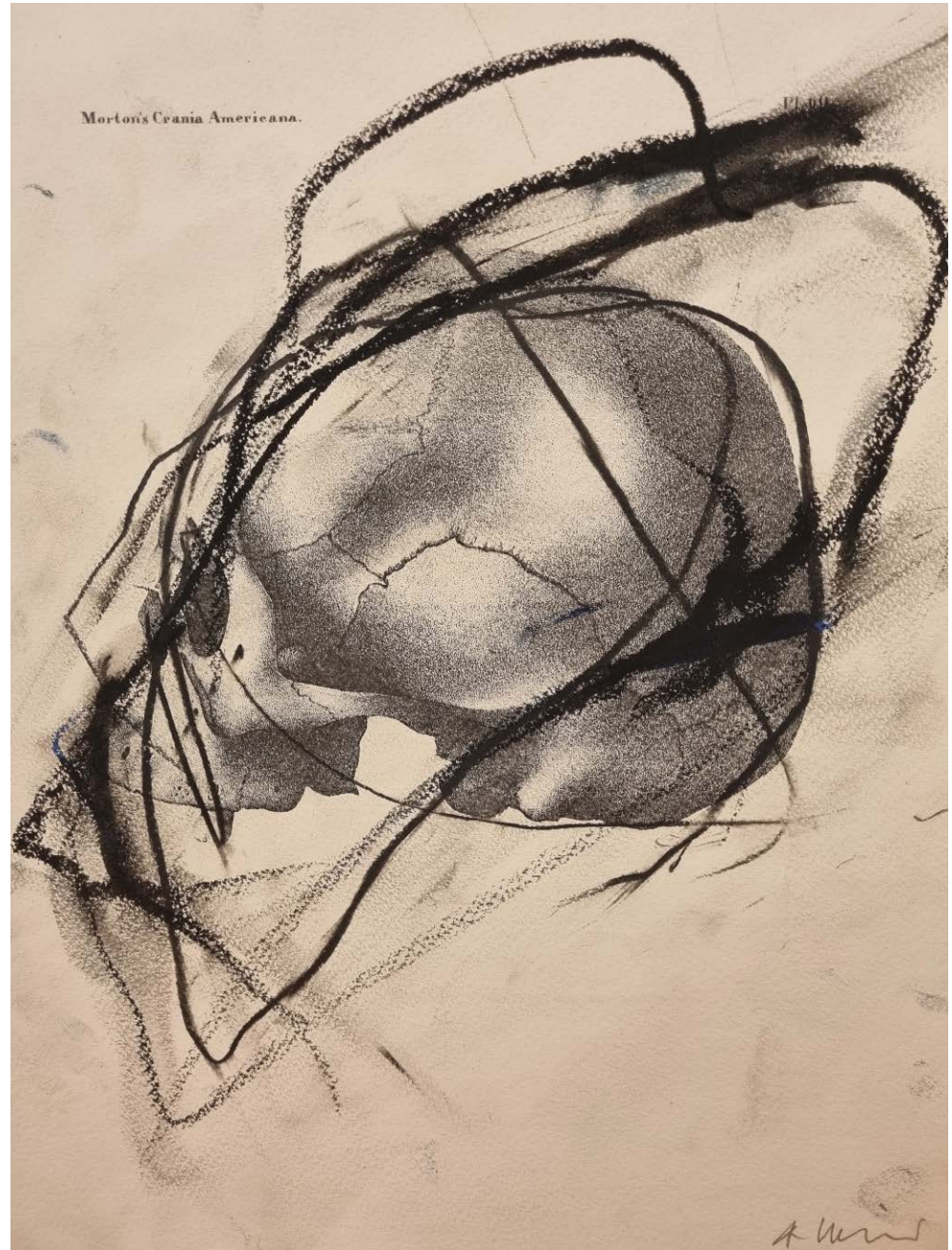
Arnulf Rainer

Untitled

Undated

Mixed media on paper

35 x 25 cm





NF/

Arnulf Rainer

Engel in landschaft

1991-92

Oil on paper and cardboard on board

73 x 102 cm

NF /

Arnulf Rainer

Wind Mühle

1995

Oil on paper and cardboard on board
102 x 73 cm



NF /

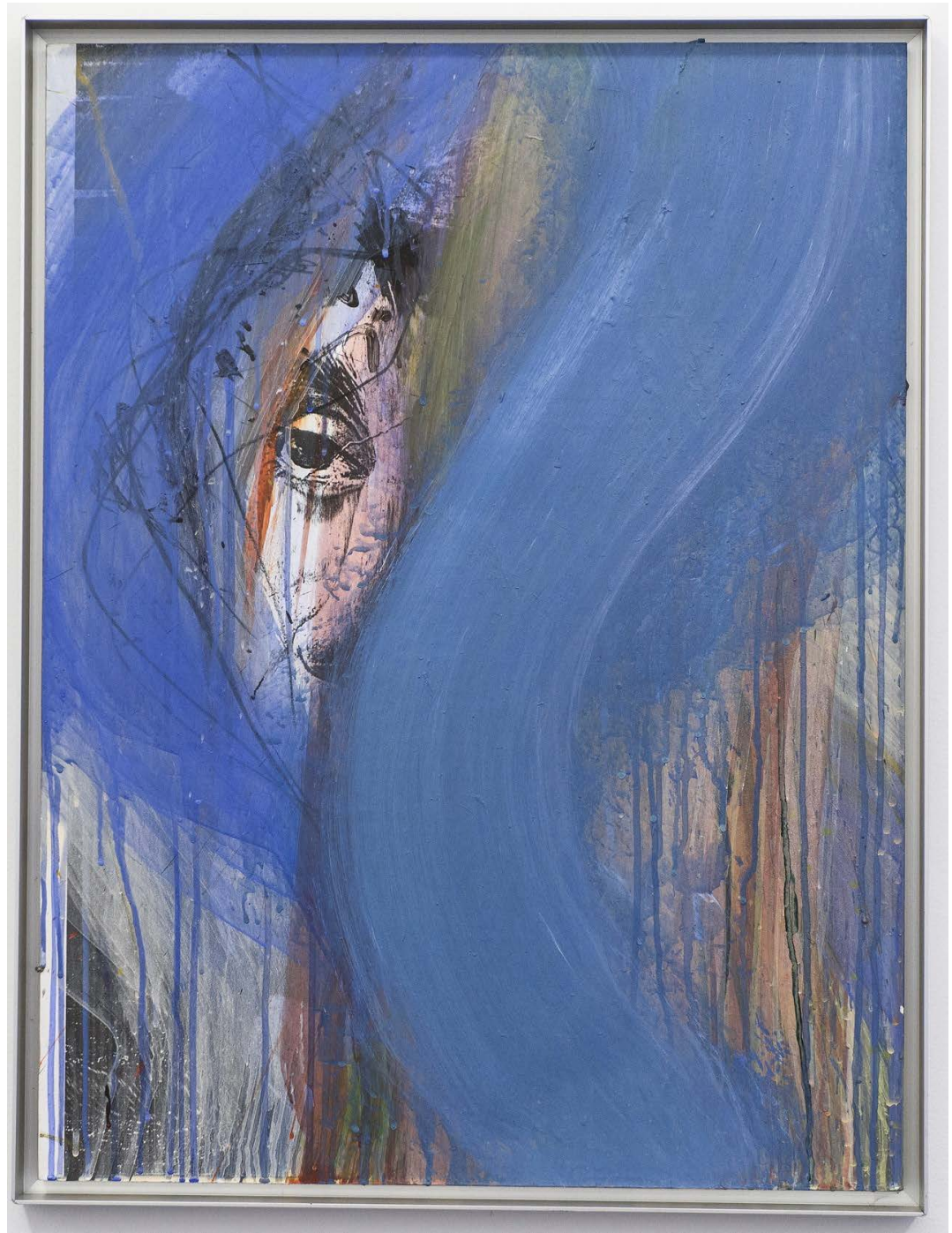
Arnulf Rainer

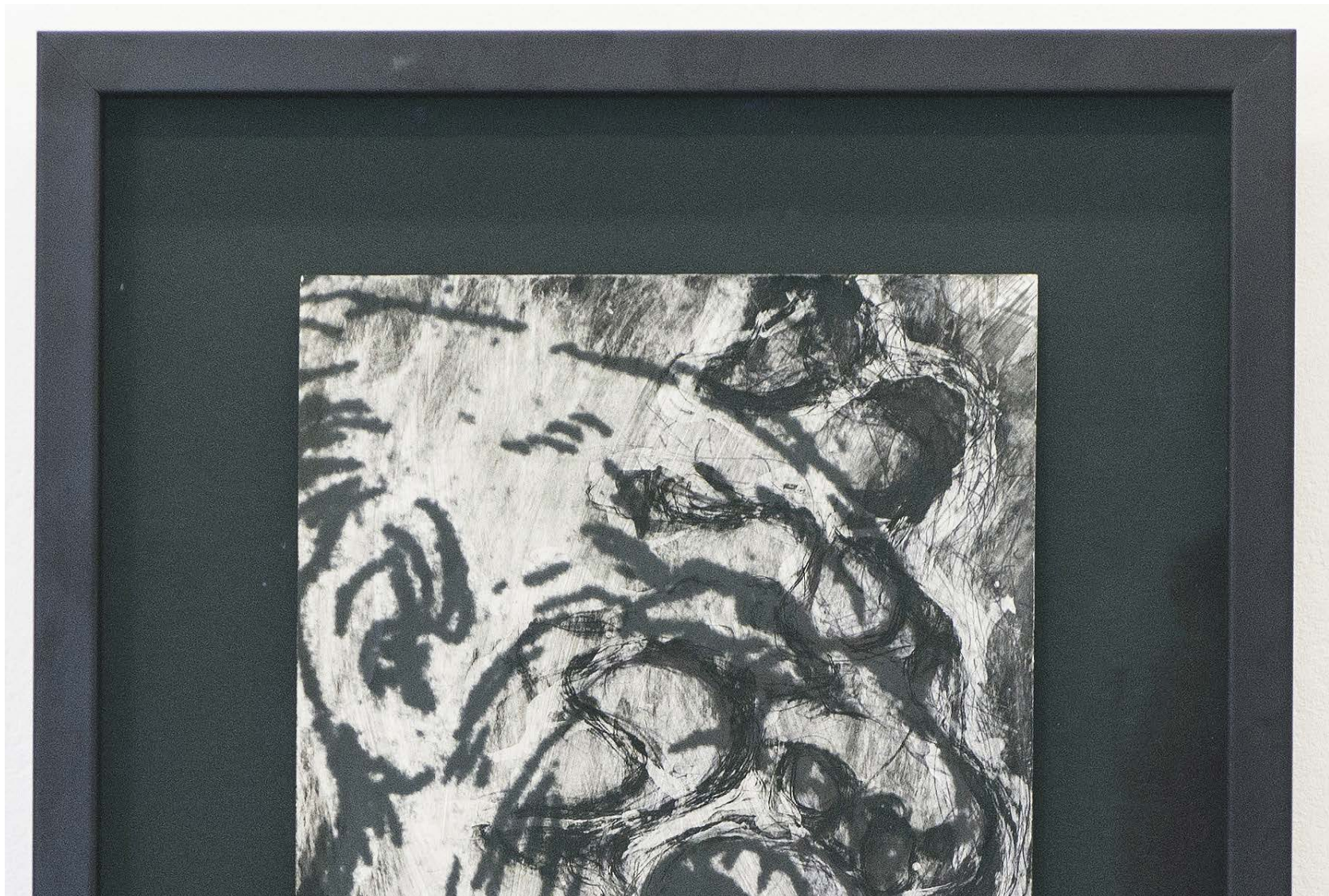
C01. Untitled (Botticelli)

1998-99

Acrylic on paper on wood

84,5 x 64,5 cm





NF /

Arnulf Rainer

Untitled

P19 ('GOYA' series)

Mixed media on photography

24 x 17 cm



NF /

Arnulf Rainer

Untitled ('Face Farces' series)

1970-75

Mixed media on photography

24 x 17 cm

NF /

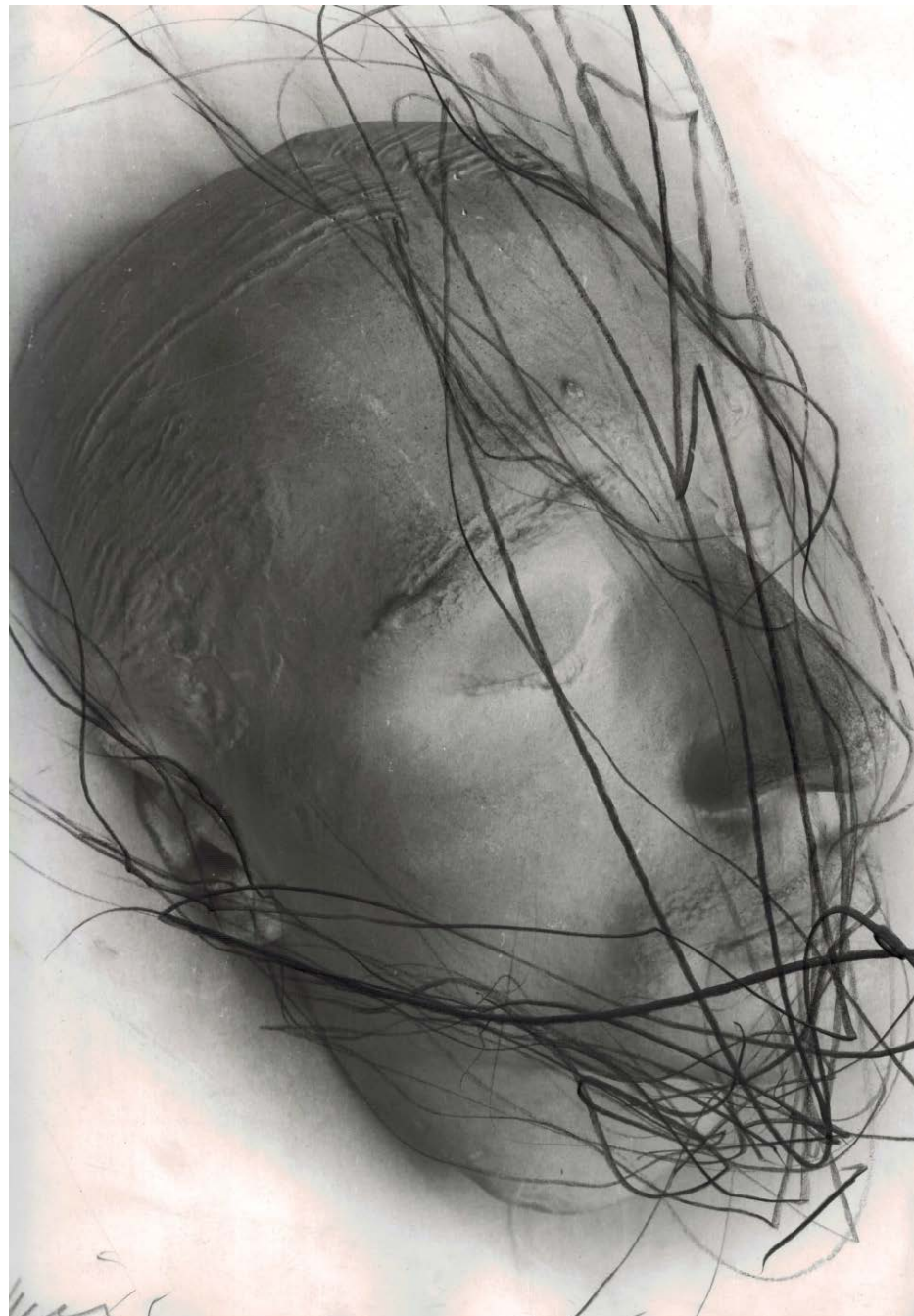
Arnulf Rainer

P10 ('Totenmasken. Franz Liszt' series)

1978

Pencil on photography

29,5 x 25 cm





NF /

Arnulf Rainer

Landschaft

1991-1992

Pastel and oil on paper and cardboard on wood

102 x 73 cm



NF /

Arnulf Rainer

Untitled

1992

Pastel and oil on paper on wood

54 x 76,5 cm

INTE

/



NF / Arnulf Rainer

Solo Exhibitions

- | | | | |
|------|--|------|--|
| 2022 | Rainer - Vedova: Ora. Fondazione Emilio e Annabianca Vedova, Venecia | | Körpersprache - Landschaftssprache. Armando Museum, Amersfoort |
| 2020 | Visages. NF/NIEVES FERNÁNDEZ, Madrid | | Stiftung St. Matthäus, Berlin. Dahinter Ángel |
| 2019 | Arnulf Rainer. A Tribute. Albertina Museum, Vienna | | Le 10 Neuf, CRAC, Montbéliard |
| | REVUE. Arnulf Rainer Museum, Baden | | Coplans Rainer. À visages découverts: Pratiques contemporaines du autoportrait |
| | Early Works, Galerie Thaddaeus Ropac, Paris | | Akira Ikeda Gallery, Taura, Hiroshima |
| 2017 | Arnulf Rainer. Die Farben des Malers Neue Ausstellung. Arnulf Rainer Museum, Baden | | Neue Fotografien. Galerie Kart Pfefferle, Munich |
| 2016 | Arnulf Rainer. Farbenfest. Galería NF/ NIEVES FERNÁNDEZ. Madrid | 2004 | Kunstverein, Ulm, Kanarien |
| | Arnulf Rainer Museum. Baden | | Gemeente Museum, La Haya |
| 2015 | Arnulf Rainer Retrospektive, Albertina Museum, Viena | | Peintures/ Surpeintures, 1995-2003. Musée Message Biblique |
| 2014 | Arnulf Rainer Retrospektive, Albertina Museum, Viena | | Marc Chagall, Nice. |
| | Damien Hirst/ Arnulf Rainer. Arnulf Rainer Museum, Baden | | Aschaffenburg Passionen retrospective, Kunsthalle Jesuitenkirche |
| | Arnulf Rainer y el arte antiguo, Arnulf Rainer Museum, Baden | 2003 | Wertfäliches Landesmuseum Münster, Germany |
| 2013 | Mario Merz/ Arnulf Rainer. Arnulf Rainer Museum, Baden | | Galería NF/ NIEVES FERNÁNDEZ. Madrid |
| 2011 | Arnulf Rainer sobre Goya. Real Academia de Bellas Artes de San Fernando, Madrid | | Cánova-Rainer. Museo Correr, Venecia |
| | Surpeintures. Maison de Victor Hugo, Paris | 2002 | Sotto la Croce. Museo Diocesano d'Arte Sacra, Venecia |
| | Lustspiel. George Baselitz/ Arnulf Rainer. Arnulf Rainer Museum, Baden | | Crosses Kreuze. Galería Jablonka, Colonia y Tony Shafrazi Gallery, New York |
| 2010 | Galería NF/ NIEVES FERNÁNDEZ. Madrid | | Le regard voilé. Galería Lelong, Paris |
| | Pinacoteca, Munich | 2001 | Arnulf Rainer. Retrospettiva 1948-2000. Galleria d'Arte Moderna, Bolonia |
| | Museum der Modern, Salzburg | | Schichten der Nacht, Arnulf Rainer-Victor Hugo |
| | Visages, Arnulf Rainer Museum, Baden | | Sinclair-Haus Bad Homburg |
| | Kreuz, Arnulf Rainer Museum, Baden | 2000 | Städtische Galerie im Lenbachhaus, Munich |
| 2009 | Musée d'Art Moderne de Saint Etienne | | Stedelijk Museum, Amsterdam. (Retrospective) |
| | Arnulf Rainer Museum, Baden | | Arnulf Rainer-Gegen Bilder. Kunstforum, Viena |
| 2008 | Galleria Belvedere, Viena | 1999 | Neue Galerie der Stadt Linz. (Retrospective) |
| | Museum Moderner Kunst Karnten, Klagenfurt | | Fingermalereien. Schleierbilder |
| 2007 | Museum der Modern, Salzburg | 1998 | Städtische Kunstsammlungen, Ausburg |
| | Galería NF/ NIEVES FERNÁNDEZ. Madrid | 1998 | Galería Nacional, Prage |
| | MAK Center for Art and Architecture, Los Angeles | | Fest Spieler. Carolino Augusteum. Salzburg Museum Art and Culture |
| | DeichtorHallen, Hamburg | 1997 | Museo Nacional de Bellas Artes, Buenos Aires |
| 2005 | Tápies/Rainer, Porteurs de Secret. ESSL Museum, Viena | | Museo Nacional de Bellas Artes, Santiago de Chile |
| | Arnulf Rainer et sa collection d'Art brut. La Maison Rouge, Paris | | Retrospectiva. 1947-97. Kunsthalle, Krems, abgrundtiefe-perspektief Die Radierungen. Kunstmuseum, Bonn |
| | | 1996 | Museo Nacional de Islandia, Reyjaviik |

NF /

- | | | | |
|------|---|------|---|
| 1994 | Lucio Fontana-Arnulf Rainer. Über das Bild hinaus. Museum für Moderne Kunst, Bozen | | Museum van Hedendaagse Kunst, Gand |
| | Katastrophe und Desaster. National Museum Cotroceni, Bucarest and Brukenthal Museum, Hermannstadt | 1982 | Documenta 7. Kassel |
| 1993 | Museum Moderner Kunst, Passau Kunsthalle, Recklinghausen | | Kruzifikationen 1951-1980. Suermondt Museum, Aix-la-Chapelle |
| 1992 | Hessisches Landesmuseum, Darmstadt | | Louisiana Museum of Modern Art, Humlebaek |
| | Moderna Galerie, Ljubljana | 1981 | Staatliche Kunsthalle. Baden-Baden |
| | Young Cross. The Menil Collection, Houston | | Städtisches Kunstmuseum, Bonn |
| | Obras Recentes. Fundação de Serralves, Oporto | | Museum des 20. Jahrhunderts. Viena |
| 1991 | Malmö Konsthall | | Stedelijk van Abbemuseum, Eindhoven. (Retrospective) |
| | Kreuz-Weisen. Kunst Station St. Peter, Colonia | | Whitechapel Art Gallery, London |
| 1990 | Castello di Rivoli, Turín | | Walker Art Center, Minneapolis |
| | Gemeentemuseum, La Haya | 1980 | Nationalgalerie, Berlin. (Retrospective) |
| | Übermalte Bücher. Städtisches Kunstmuseum, Bonn | 1979 | Frankfurter Kunstverein, Frankfurt |
| 1989 | Kunstverein, Braunschweig | | Württembergischer Kunstverein, Stuttgart |
| | Solomon R. Guggenheim Museum. New York. (Retrospective) | | Frauenakte-Frauenposen. Galería Ulysses, Viena |
| | Museum of Contemporary Art, Chicago | 1978 | Linguaggio del corpo, Körpersprache, Body Language. Venezia Biennial, Austria Pavilion, Venezia |
| | Drawing on Death. Moore College of Art and Design. Philadelphia | | Österreichische Galerie. Viena |
| 1988 | Arnulf Rainer. Werke der Fünziger bis achtziger Jahre. Museen Haus Lange und Haus Esters, Krefeld | 1977 | Kunsthalle, Berna. (Retrospective) |
| | Neue Galerie, Staatliche und Städtische Kunstsammlungen, Kassel | | Städtische Galerie im Lenbachhaus, Munich |
| | Städtisches Museum, Schloss Morsbroich, Leverkusen | | Photoüberzeichnungen Franz Xaver Messerschmidt. Kunstraum, Munich |
| 1987 | Magasin, Centre National d'Art Contemporain, Grenoble | | Kestner Gesellschaft, Hannover |
| | Schirn Kunsthalle, Frankfurt | 1976 | Face Farces: Fotoübermalungen und Fotoüberzeichnungen 1969-1976. Neue Galerie der Stadt, Linz |
| | Masqué-Demasqué. Musées Royaux des Beaux-Arts, Brussels | | Misch-und Trennkunst. Kulturhaus, Graz |
| | Museum Overholland, Amsterdam | 1975 | Hessisches Landesmuseum, Darmstadt |
| 1986 | The Grey Art Gallery and Study Center, New York University | | Face Farces, Bodyposes 1968-1975. Galería Stadler, Paris |
| | North Carolina Museum of Art, Raleigh | 1974 | Gestische Handmalereien. Kunstverein BremerhavenKunstraum, Munich |
| 1985 | Theater/Minetti. Nationalgalerie, Berlin | 1973 | Graphische Sammlung Albertina, Viena |
| | Galería Maeght Lelong, Zürich | 1972 | Busch-Reisinger Museum. Cambridge, Massachusetts |
| | Museum of Modern Art, Oxford | 1971 | Kunstverein, Hamburg. (Retrospective) |
| 1984 | Kunstmuseum, Dusseldorf | 1970 | Kunstverein Freiburg im Breisgau |
| | Mort et Sacrifice. Musée National d'Art Moderne, Centre Georges Pompidou, Paris | | Face Forces 1965-1969. Galería Van de Loo, Munich |
| 1983 | Kunstmuseum Hannover y Sammlung Sprengel, Hannover | 1969 | Arnulf Rainer. Zeichnungen 1947-1951. Galería Ariadne, Viena |
| | | 1968 | Museum des 20. Jahrhunderts, Wien. (Retrospective) |
| | | 1964 | Galería Springer. Berlin |

NF/

- 1962 Galería Schmela, Dusseldorf
 Minami Gallery, Tokyo
- 1961 Galería del Cavallino, Venecia
- 1960 Übermalungen. Galería nächst St. Stephan, Viena
- 1957 Monochrome Komplexe 1955 bis 1957. Secession Museum, Viena
- 1956 Kruzifikationen. Galería nächst St. Stephan, Viena
- 1954 Proportionsanordnungen. Galería Würthle. Viena
- 1952 Galería Franck, Frankfurt
 Galería Art-Club, Viena
- 1951 Galería Kleinmayr, Klagenfurt

Public collections (selection)

Stedelijk Museum. Amsterdam
Neue Nationalgalerie Berlin. (Donación Otto van de Loo)
Städtisches Kunstrnuseum. Bonn
Hessisches Landesmuseum. Darmstadt
Kunstsammlung Nordrhein-Westfalen. Dusseldorf
Städtisches Kunstrnuseum. Dusseldorf
Gemeetitemuseum. La Haya
Stedelijk Van Abbemuseum. Eindhoven
Kunsthalle Hamburg. Hamburg
Museum Ludwig. Colonia
Tate Gallery. London
Staatsgalerie modemer Kunst. Munich. (From the Prince Franz von Bayerm Collection and Verein Gallery)
Städtische Galene im Lenbachhaus. Munich
Museum of Modern Art. New York
Metropolitan Museum. New York
The Solomon R. Guggenheim Museum. New York
Centre Georges Pompidou. París
Rupertinum. Salzburgo
Staatsgalerie Stuttgart. Stuttgart
CGAC. Santiago de Compostela. (Fundación ARCO).
IVAM. Valencia
Museum Modemer Kunst/Museum dez 20. Jahrhunderts. Wien
Museo Nacional Centro de Arte Reina Sofia. Madrid



Blanca de Navarra, 12.
28010, Madrid

NF / NIEVES FERNÁNDEZ

www.nfgaleria.com