



NF /

Arnulf Rainer
Baden, 1929

His commitment to the search for new pictorial approaches, accompanied by his performative work and extensive written documentation, have enshrined Arnulf Rainer as one of the most influential living artists.

Always exalting the body language that painting implies, the artist highlights the first forms of human expression and, in the 1970s, he begins to photograph himself, creating a link between the theatrical and the graphic as a means of expression.

Near to Viennese Actionism and exploring gestures through performance, he expands his practice to video, and begins painting with his hands, which will accompany him throughout his career.

Mainly interested in automatism and the desire to destroy conventional communication in order to recover the richness of human expression, Arnulf Rainer bases his expressiveness on the concealment of images of other artists and self-portraits, reaching abstraction and almost total obscuration of forms. In this sense, his body of work has always aimed to free itself from its own limitations, even exceeding by the form of canvases the conventional standards.

Arnulf Rainer

In 1978, he represents Austria at the Venice Biennale and is awarded with the Grand Austrian State Prize. Since 1981 is a member of the Fine Arts Academies both in Berlin and Vienna. In that same year, Rainer is granted with the Max Beckman Prize in Frankfurt and in 1989 he was given the International Photography Prize in New York.

Among the museums that have dedicated retrospectives to him, there can be outlined, the Albertina Museum in Vienna, the Stedelijk Museum in Amsterdam, the Guggenheim Museum in New York, the Nationalgalerie in Berlin, Bern Kunsthalle and Hamburg Kunstverein.

In 2009, the Arnulf Museum is opened in Baden, Austria.

NF /

Arnulf Rainer. Visages

With a selection of artworks spanning from 1970 to 2002, Visages reviews the importance of faces in the work of Arnulf Rainer through three different series: his self-portraits or *Face Farces*, the Death Masks or *Totenmaskes* and finally the veiled pictures or *Schleierbildern*, in which the artist uses as a departure point preexisting images from the history of art.

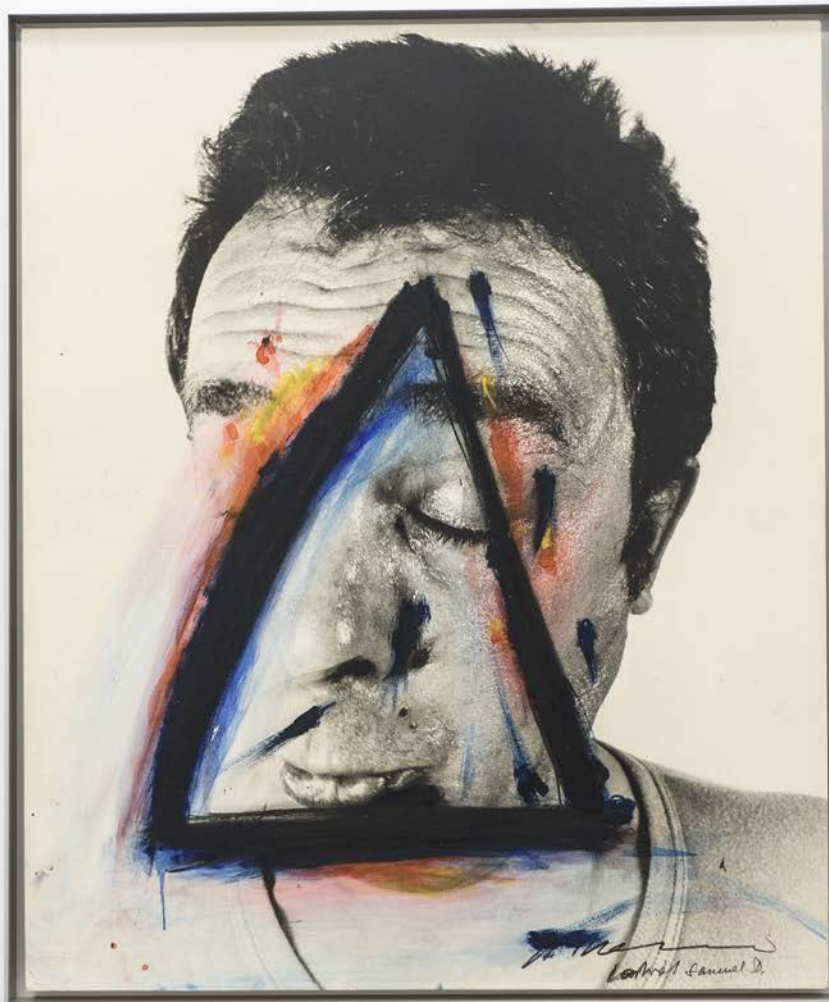
With the prominence of the *Face Farces*, which depict a person who can only express himself through the movements of his body, in an attempt of the artist to dissolve himself, as a metaphoric gesture of the oblivion, completely deliberated, of what art is, this exhibition gathers a serie of works that insist the whole of art can find its origins in an artist. Either a naked man without any tools for the act of painting, overflowed by painting, either his gaze covering preexisting images.

The overpaintings of the *Schleierbilder* are the physical trace of this gaze, without the intention of adding any further meaning to the previous image, but rather remove excess meaning anchored to the image through habits and historicization of art.

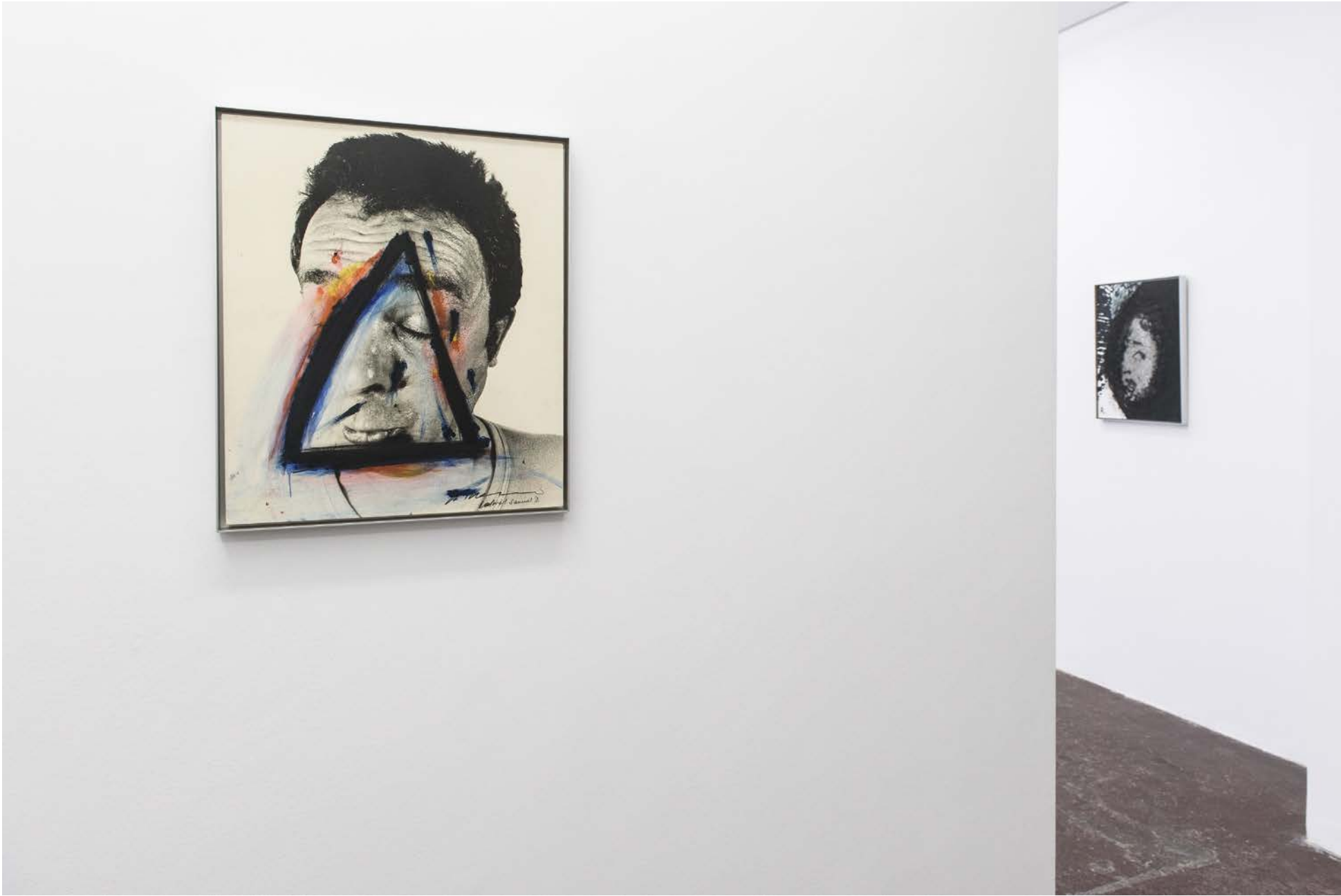
Just as Cézanne, undaunted, observed his apples and his mountains, and day by day helped them to life in his painting, so too does Rainer tirelessly recounts what he observes, day by day, in art, paintings and life

Jean-Michel Foray





NF / Serie Face Farces. *Portrait Samuel D.*
1970-75
Mixed media on photograph on wood
63 x 53 cm



NF/ Arnulf Rainer
Visages
2020
Installation view
NF/ NIEVES FERNÁNDEZ



NF/ Arnulf Rainer
Visages
2020
Installation view
NF/ NIEVES FERNÁNDEZ



NF / *Sin título (Botticelli)*
1998-99
Acrylic on paper on wood
84,5 x 64,5 cm



NF / Arnulf Rainer
Visages
2020
Installation view
NF/ NIEVES FERNÁNDEZ



NF / *Serie Face Farces*
1970-75
Pencil on photograph
18 x 24 cm



NF / *Serie Face Farces*
1970-75
Pencil on photograph
18 x 24 cm



NF/ Arnulf Rainer
Visages
2020
Installation view
NF/ NIEVES FERNÁNDEZ



NF / Sin título
2002
Acrylic on paper on wood
64 x 51,5 cm



NF / Arnulf Rainer
Visages
2020
Installation view
NF/ NIEVES FERNÁNDEZ



NF / *GOYAserie*
1983
Mixed media on photograph on wood
63 x 52,5 cm



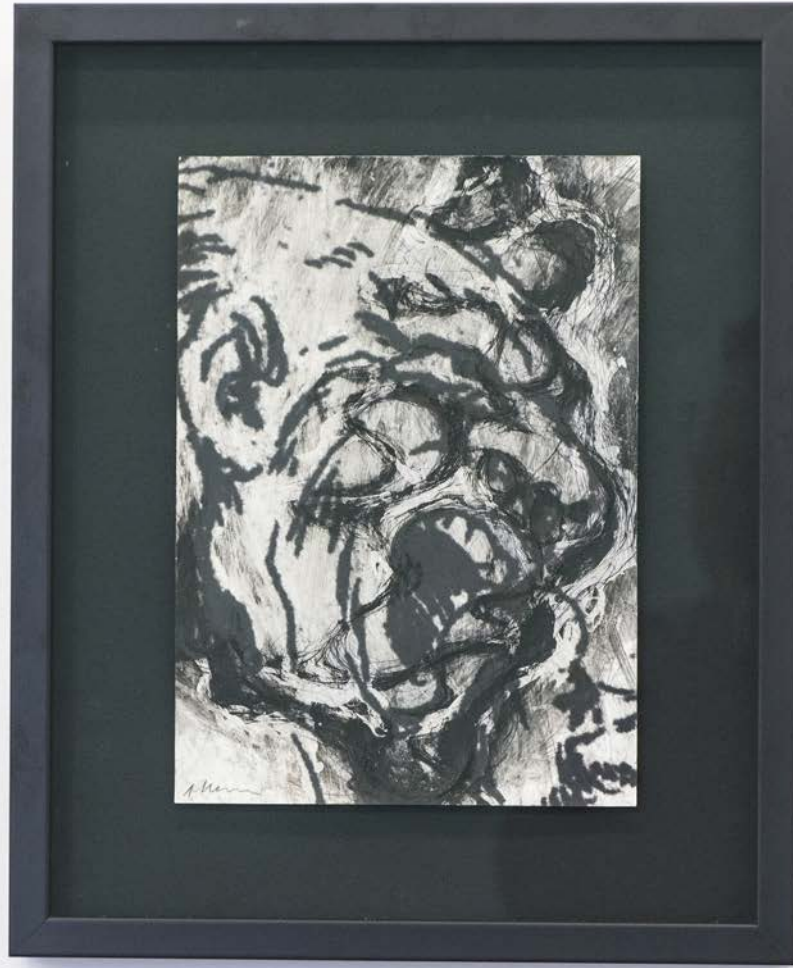
NF /

GOYAserie

1983

Mixed media on photograph on wood

63,5 x 52 cm



NF / GOYAserie
1983
Mixed media on photograph
24 x 17 cm



NF /

GOYAserie

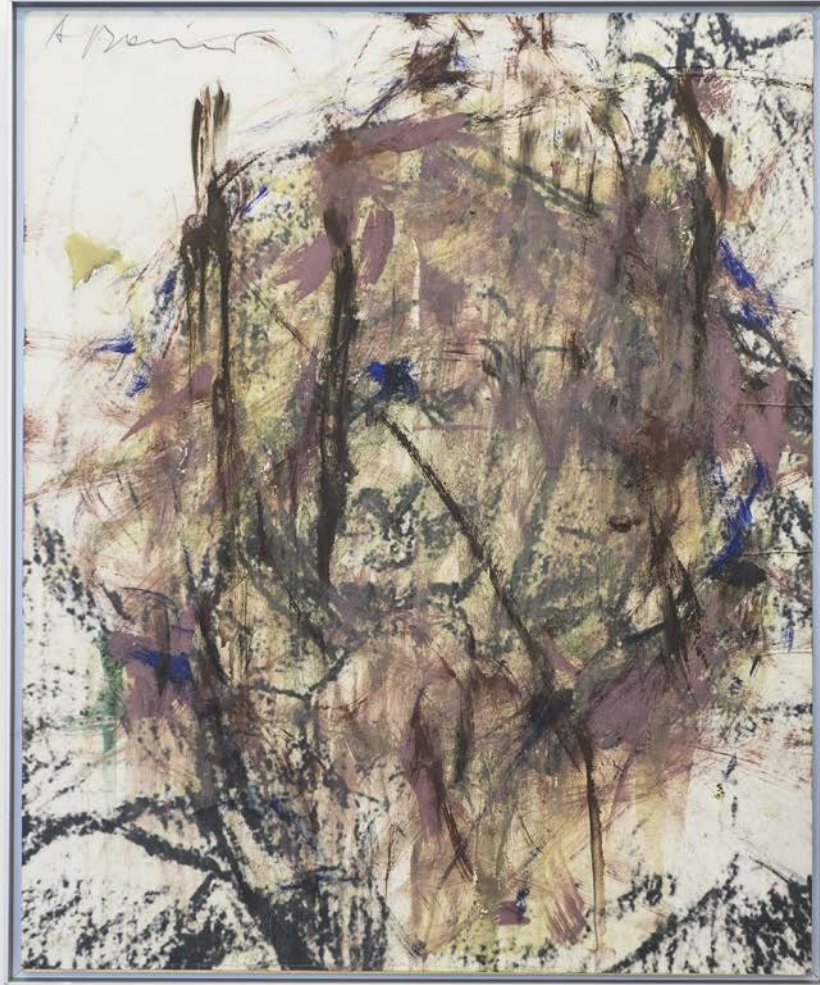
1983

Mixed media on photograph on wood

63 x 52,5 cm



NF/ Arnulf Rainer
Visages
2020
Installation view
NF/ NIEVES FERNANDEZ



NF /

GOYAserie

1983

Mixed media on photograph on wood

63,5 x 52,5 cm



NF / GOY Aserie
1983
Mixed media on photograph on wood
63 x 52,5 cm



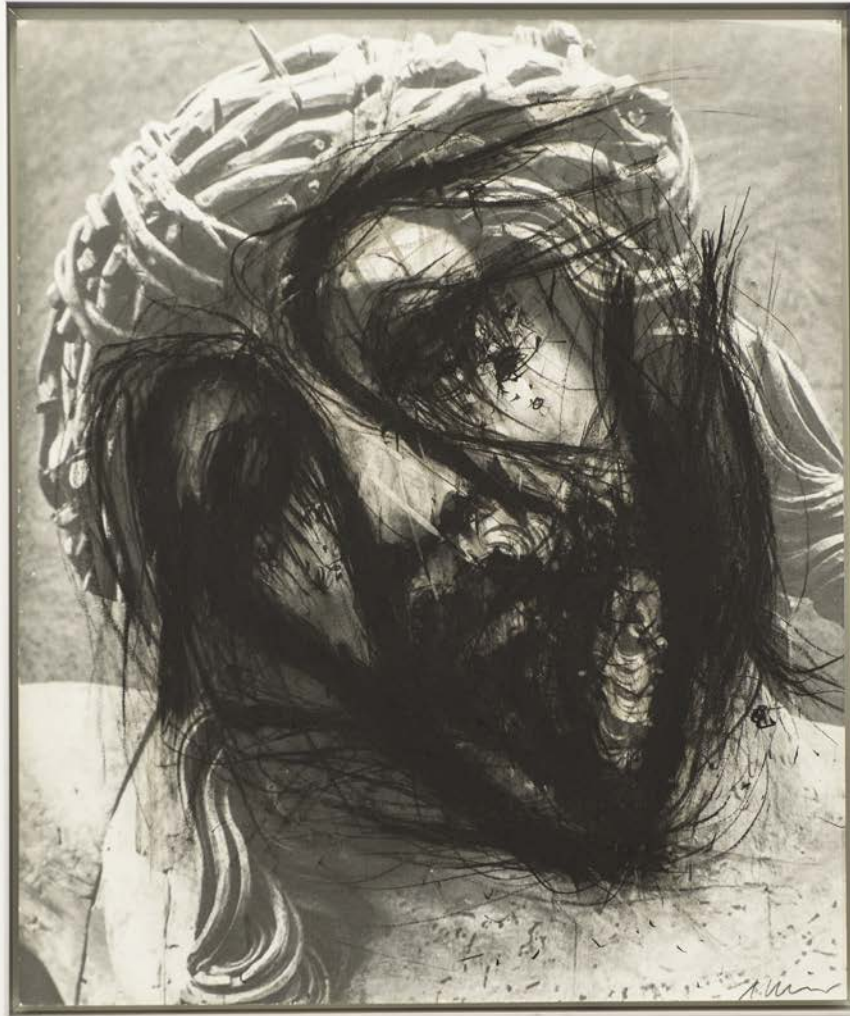
NF / GOYAserie
1983
Mixed media on photograph
24 x 17 cm



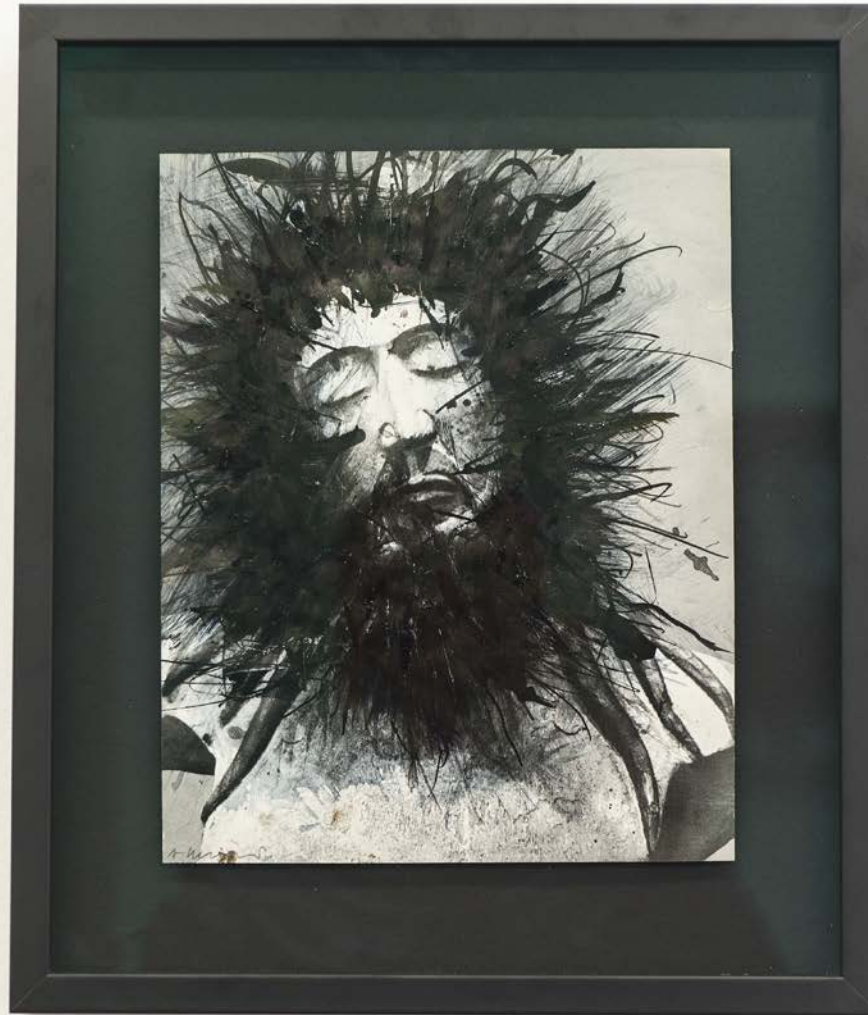
NF / GOYAserie
1983
Mixed media on photograph
24 x 17 cm



NF/ Arnulf Rainer
Visages
2020
Installation view
NF/ NIEVES FERNANDEZ



NF / Riemenschneiderserie
1980-81
Oilstick on photograph on wood
62 x 52 cm



NF / *Serie Christusköpfe*
1979-80
Indian ink on paper
27 x 21,5 cm



NF / *Serie Christusköpfe*
1979-80
Indian ink on paper
26,5 x 19,5 cm



NF/ Arnulf Rainer
Visages
2020
Installation view
NF/ NIEVES FERNÁNDEZ



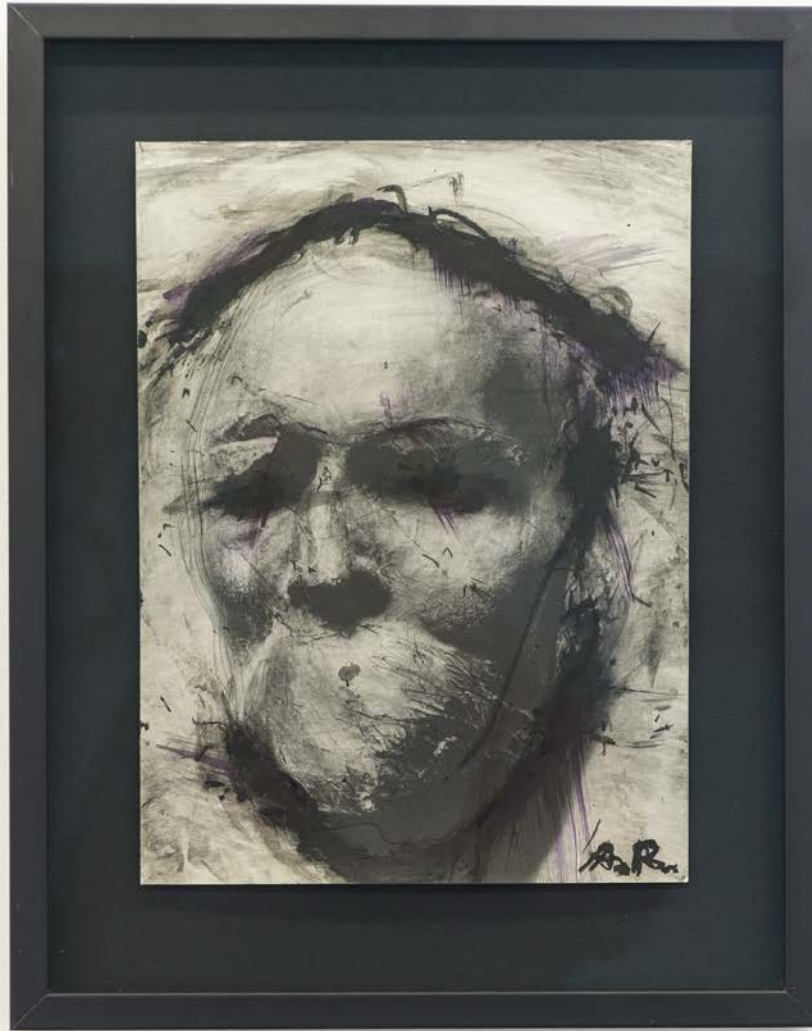
NF / *Serie Face Farces*
1970-75
Mixed media on photograph on wood
50,5 x 63 cm



NF/ Arnulf Rainer
Visages
2020
Installation view
NF/ NIEVES FERNANDEZ



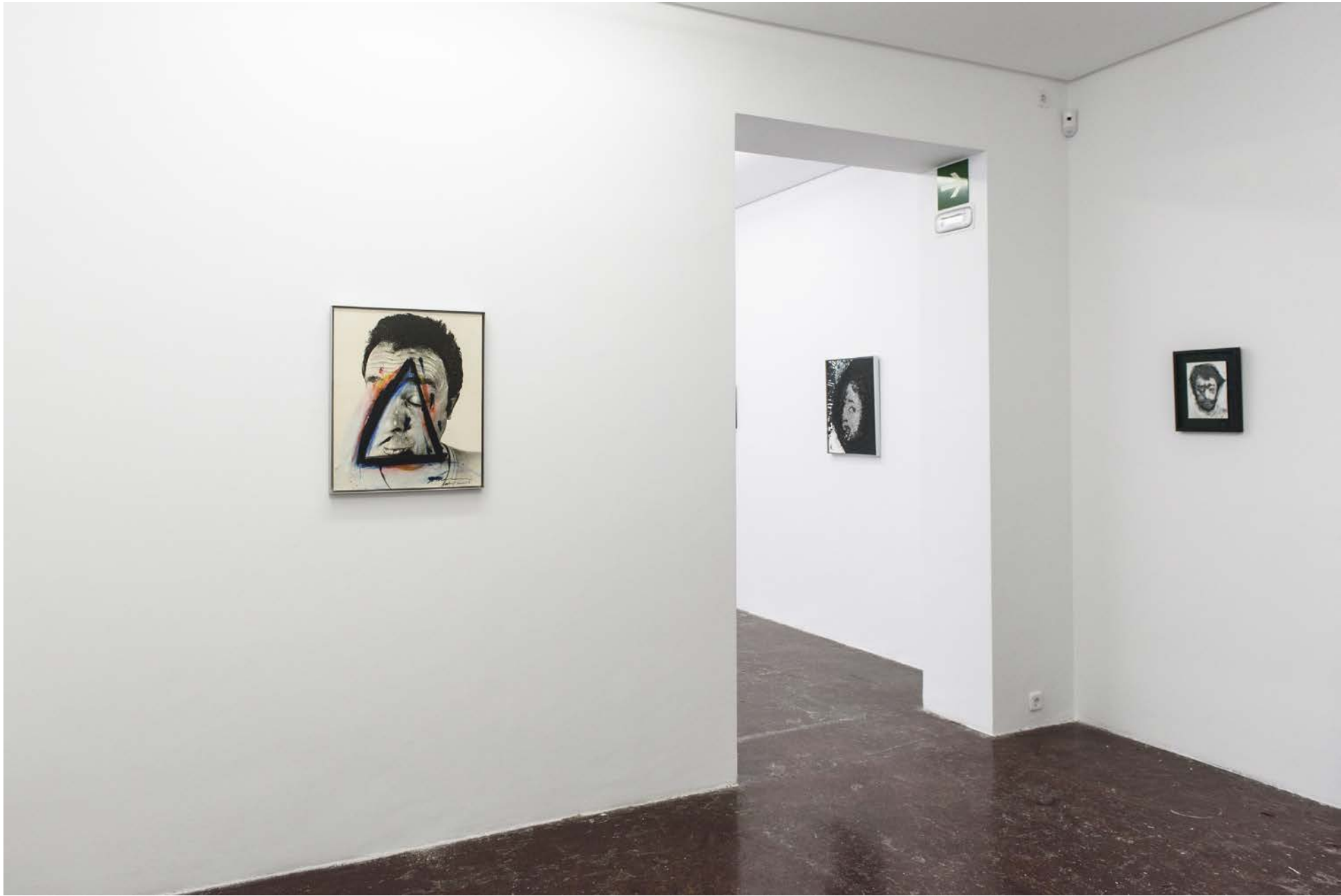
NF / *Serie Totenmasken. Frank Wedekind*
1978
Pencil on photograph
29,5 x 25 cm



NF / *Serie Totenmasken. Friedrich Nietzsche*
1978
Pencil on photograph
29,5 x 25 cm



NF/ Arnulf Rainer
Visages
2020
Installation view
NF/ NIEVES FERNÁNDEZ



NF / Arnulf Rainer
Visages
2020
Installation view
NF/ NIEVES FERNÁNDEZ



NF / Serie Face Farces. Hunger. Foto Peter Kubelka
1970-75
Mixed media on photograph on wood
50 x 61,5 cm



NF / Arnulf Rainer
Visages
2020
Installation view
NF/ NIEVES FERNÁNDEZ



NF / *Serie Face Farces*
1970-75
Pencil on photograph
24 x 18 cm



NF/ Arnulf Rainer
Visages
2020
Installation view
NF/ NIEVES FERNÁNDEZ



NF / *Sin título*
1998
Acrylic on paper on wood
64 x 54 cm



NF / *Sin título*
2001
Acrylic on paper on wood
62,5 x 53 cm



NF/ Arnulf Rainer
Visages
2020
Installation view
NF/ NIEVES FERNANDEZ

INTE



NF / Arnulf Rainer

Exposiciones Individuales

- | | | | |
|------|--|------|--|
| 2020 | Visages. NF/NIEVES FERNÁNDEZ, Madrid | | Körpersprache - Landschaftssprache. Armando Museum, Amersfoort |
| 2019 | Arnulf Rainer. A Tribute. Albertina Museum, Vienna | | Stiftung St. Matthäus, Berlin. Dahinter Ángel |
| | REVUE. Arnulf Rainer Museum, Baden | | Le 10 Neuf, CRAC, Montbéliard |
| | Early Works, Galerie Thaddaeus Ropac, Paris | | Coplans Rainer. À visages découverts: Pratiques contemporaines |
| 2017 | Arnulf Rainer. Die Farben des Malers Neue Ausstellung. Arnulf Rainer | | du autoportrait Akira Ikeda Gallery, Taura, Hiroshima |
| | Museum, Baden | | Neue Fotografien. Galerie Kart Pfefferle, Munich |
| | Arnulf Rainer, Mana Contemporary, Jersey | 2004 | Kunstverein, Ulm, Kanarien |
| | Arnulf Rainer Neue Arbeiten auf Papier, Lentos Kunstmuseum Linz, Linz | | Gemeente Museum, The Hague |
| 2016 | Arnulf Rainer. Farbenfest. NF/NIEVES FERNÁNDEZ, Madrid | | Peintures/Surpeintures, 1995-2003. Musée Message Biblique |
| | Arnulf Rainer Museum. Baden | | Marc Chagall, Nice |
| 2015 | Arnulf Rainer Retrospektive, Albertina Museum, Vienna | | Aschaffenburg Passionen retrospective, Kunsthalle Jesuitenkirche |
| 2014 | Arnulf Rainer Retrospektive, Albertina Museum, Vienna | 2003 | Wertfälisches Landesmuseum Münster |
| | Damien Hirst/ Arnulf Rainer. Arnulf Rainer Museum, Baden | | Galería NF/NIEVES FERNÁNDEZ, Madrid |
| | Arnulf Rainer y el arte antiguo, Arnulf Rainer Museum, Baden | | Cánova-Rainer. Museo Correr, Venice |
| 2013 | Mario Merz/ Arnulf Rainer. Arnulf Rainer Museum, Baden | 2002 | Sotto la Croce. Museo Diocesano d'Arte Sacra, Venice |
| 2011 | Arnulf Rainer sobre Goya. Real Academia de Bellas Artes de San Fernando, | | Crosses Kreuze. Galería Jablonka, Colonia y Tony Shafrazi Gallery. |
| | Madrid | | Nueva York |
| | Surpeintures. Maison de Victor Hugo, Paris | 2001 | Le regard voilé. Galería Lelong, Paris |
| | Lustspiel. George Baselitz/Arnulf Rainer. Arnulf Rainer Museum, Baden | | Arnulf Rainer. Retrospectiva 1948-2000. Galleria d'Arte Moderna, Bologna |
| 2010 | Galería NF/NIEVES FERNÁNDEZ, Madrid | | Schichten der Nacht, Arnulf Rainer-Victor Hugo |
| | Pinacoteca, Munich | | Sinclair-Haus Bad Homburg |
| | Museum der Modern, Salzburg | 2000 | Städtische Galerie im Lenbachhaus, Munich |
| | Visages, Arnulf Rainer Museum, Baden | | Stedelijk Museum, Amsterdam. (Retrospective) |
| | Kreuz, Arnulf Rainer Museum, Baden | | Arnulf Rainer-Gegen Bilder. Kunstforum, Vienna |
| 2009 | Musée d'Art Moderne de Saint Etienne | 1999 | Neue Galerie der Stadt Linz. (Retrospective) |
| | Arnulf Rainer Museum, Baden | | Fingermalereien.Schleierbilder |
| 2008 | Galerie Belvedere, Vienna | 1998 | Städtische Kunstsammlungen, Ausburg |
| | Museum Moderner Kunst Karnten, Klagenfurt | 1998 | Galería Nacional, Prage |
| 2007 | Museum der Modern, Salzburg | | Fest Spieler. Carolino Augusteum. Salzburg Museum Art and Culture |
| | Galería NF/NIEVES FERNÁNDEZ, Madrid | 1997 | Museo Nacional de Bellas Artes, Buenos Aires |
| | MAK Center for Art and Architecture, Los Angeles | | Museo Nacional de Bellas Artes, Santiago de Chile |
| | DeichtorHallen, Hamburg | | Retrospectiva. 1947-97. Kunsthalle, Krems, abgrundtiefe-perspektief Die |
| 2005 | Tápies/Rainer, Porteurs de Secret. ESSL Museum, Vienna | | Radierungen. Kunstmuseum, Bonn |
| | Arnulf Rainer et sa collection d'Art brut. La Maison Rouge, París | 1996 | Museo Nacional de Islandia, Reyjavik |
| | | | 23 Bienal Internacional de São Paulo |
| | | | Centro Galego de Arte Contemporáneo, Santiago de Compostela |

NF /

- | | | | |
|------|--|------|--|
| 1995 | Natur-Mikrokosmos Makrokosmos. Kärnter Kandesgalerie, Klagenfurt
Bondefanten Museum, Maastricht
Museum für Moderne Kunst, Bozen | | Mort et Sacrifice. Musée National d'Art Moderne, Centre Georges Pompidou, Paris |
| 1994 | Lucio Fontana-Arnulf Rainer. Über das Bild hinaus. Museum für Moderne Kunst, Bozen
Katastrophe und Desaster. National Museum Cotroceni, Bucarest and Brukenthal Museum, Hermannstadt | 1983 | Kunstmuseum Hannover y Sammlung Sprengel, Hannover
Museum van Hedendaagse Kunst, Gand |
| 1993 | Museum Moderner Kunst, Passau Kunsthalle, Recklinghausen | 1982 | Documenta 7. Kassel
Kruzifikationen 1951-1980. Suermondt Museum, Aix-la-Chapelle
Louisiana Museum of Modern Art, Humlebaek |
| 1992 | Hessisches Landesmuseum, Darmstadt
Moderna Galerie, Ljubljana
Young Cross. The Menil Collection, Houston
Obras Recentes. Fundação Serralves, Porto | 1981 | Staatliche Kunsthalle. Baden-Baden
Städtisches Kunstmuseum, Bonn
Museum des 20. Jahrhunderts. Vienna
Stedelijk van Abbemuseum, Eindhoven. (Retrospectiva)
Whitechapel Art Gallery, Londres
Walker Art Center, Minneapolis |
| 1991 | Malmö Konsthall
Kreuz-Weisen. Kunst Station St. Peter, Cologne | 1980 | Nationalgalerie, Berlin. (Retrospectiva) |
| 1990 | Castello di Rivoli, Torino
Gemeentemuseum, The Hague
Übermalte Bücher. Städtisches Kunstmuseum, Bonn | 1979 | Frankfurter Kunstverein, Frankfurt
Württembergischer Kunstverein, Stuttgart
Frauenakte-Frauenposen. Galería Ulysses, Vienna |
| 1989 | Kunstverein, Braunschweig
Solomon R. Guggenheim Museum. Nueva York. (Retrospectiva)
Museum of Contemporary Art, Chicago
Drawing on Death. Moore College of Art and Design. Philadelphia | 1978 | Linguaggio del corpo, Körpersprache, Body Language. Venecia Biennial, Austria Pavilion, Venice
Österreichische Galerie. Vienna |
| 1988 | Arnulf Rainer. Werke der Fünziger bis achtziger Jahre. Museen Haus Lange und Haus Esters, Krefeld
Neue Galerie, Staatliche und Städtische Kunstsammlungen, Kassel
Städtisches Museum, Schloss Morsbroich, Leverkusen | 1977 | Kunsthalle, Berna. (Retrospective)
Städtische Galerie im Lenbachhaus, Munich
Photoüberzeichnungen Franz Xaver Messerschmidt. Kunstraum, Munich
Kestner Gesellschaft, Hannover |
| 1987 | Magasin, Centre National d'Art Contemporain, Grenoble
Schirn Kunsthalle, Frankfurt
Masqué-Demasqué. Musées Royaux des Beaux-Arts, Bruselas
Museum Overholland, Amsterdam | 1976 | Face Farces: Fotoübermalungen und Fotoüberzeichnungen 1969-1976. Neue Galerie der Stadt, Linz
Misch-und Trennkunst. Kulturhaus, Graz |
| 1986 | The Grey Art Gallery and Study Center, New York University
North Carolina Museum of Art, Raleigh | 1975 | Hessisches Landesmuseum, Darmstadt
Face Farces, Bodyposes 1968-1975. Galería Stadler, Paris |
| 1985 | Theater/Minetti. Nationalgalerie, Berlin
Galería Maeght Lelong, Zürich
Museum of Modern Art, Oxford | 1974 | Gestische Handmalereien. Kunstverein BremerhavenKunstraum, Munich |
| 1984 | Kunstmuseum, Dusseldorf | 1973 | Graphische Sammlung Albertina, Vienna |
| | | 1972 | Busch-Reisinger Museum. Cambridge, Massachusetts |
| | | 1971 | Kunstverein, Hamburgo. (Retrospective) |
| | | 1970 | Kunstverein Freiburg im Breisgau
Face Farces 1965-1969. Galería Van de Loo, Munich |

NF/

- 1969 Arnulf Rainer. Zeichnungen 1947-1951. Galería Ariadne, Vienna
1968 Museum des 20. Jahrhunderts, Vienna (Retrospective)
1964 Galería Springer. Berlín
1962 Galería Schmela, Dusseldorf
Minami Gallery, Tokyo
1961 Galería del Cavallino, Venice
1960 Übermalungen. Galería nächst St. Stephan, Vienna
1957 Monochrome Komplexe 1955 bis 1957. Secession Museum, Vienna
1956 Kruzifikationen. Galería nächst St. Stephan, Vienna
1954 Proportionsanordnungen. Galería Würthle. Vienna
1952 Galería Franck, Frankfurt
Galería Art-Club, Vienna
1951 Galería Kleinmayr, Klagenfurt

Colecciones Públicas

- Stedelijk Museum. Amsterdam
Neue Nationalgalerie Berlin. (Donation Otto van de Loo)
Städtisches Kunstmuseum. Bonn
Hessisches Landesmuseum. Darmstadt
Kunstsammlung Nordrhein-Westfalen. Dusseldorf
Städtisches Kunstmuseum. Dusseldorf
Gemeentemuseum. The Hague
Stedelijk Van Abbemuseum. Eindhoven
Kunsthalle Hamburg. Hamburg
Museum Ludwig. Cologne
Tate Gallery. London
Staatsgalerie moderner Kunst. Munich. (From the Prince Franz von Bayern Collection and Verein Gallery)
Städtische Galerie im Lenbachhaus. Munich
Museum of Modern Art. New York
Metropolitan Museum. New York
The Solomon R. Guggenheim Museum. New York
Centre Georges Pompidou. París
Rupertinum. Salzburg
Staatsgalerie Stuttgart. Stuttgart
CGAC. Santiago de Compostela. (Fundación ARCO).
IVAM. Valencia
Museum Moderner Kunst/Museum des 20. Jahrhunderts. Vienna
Museo Nacional Centro de Arte Reina Sofía. Madrid

NF /



Blanca de Navarra, 12.
28010, Madrid

NF / NIEVES FERNÁNDEZ

www.nfgaleria.com